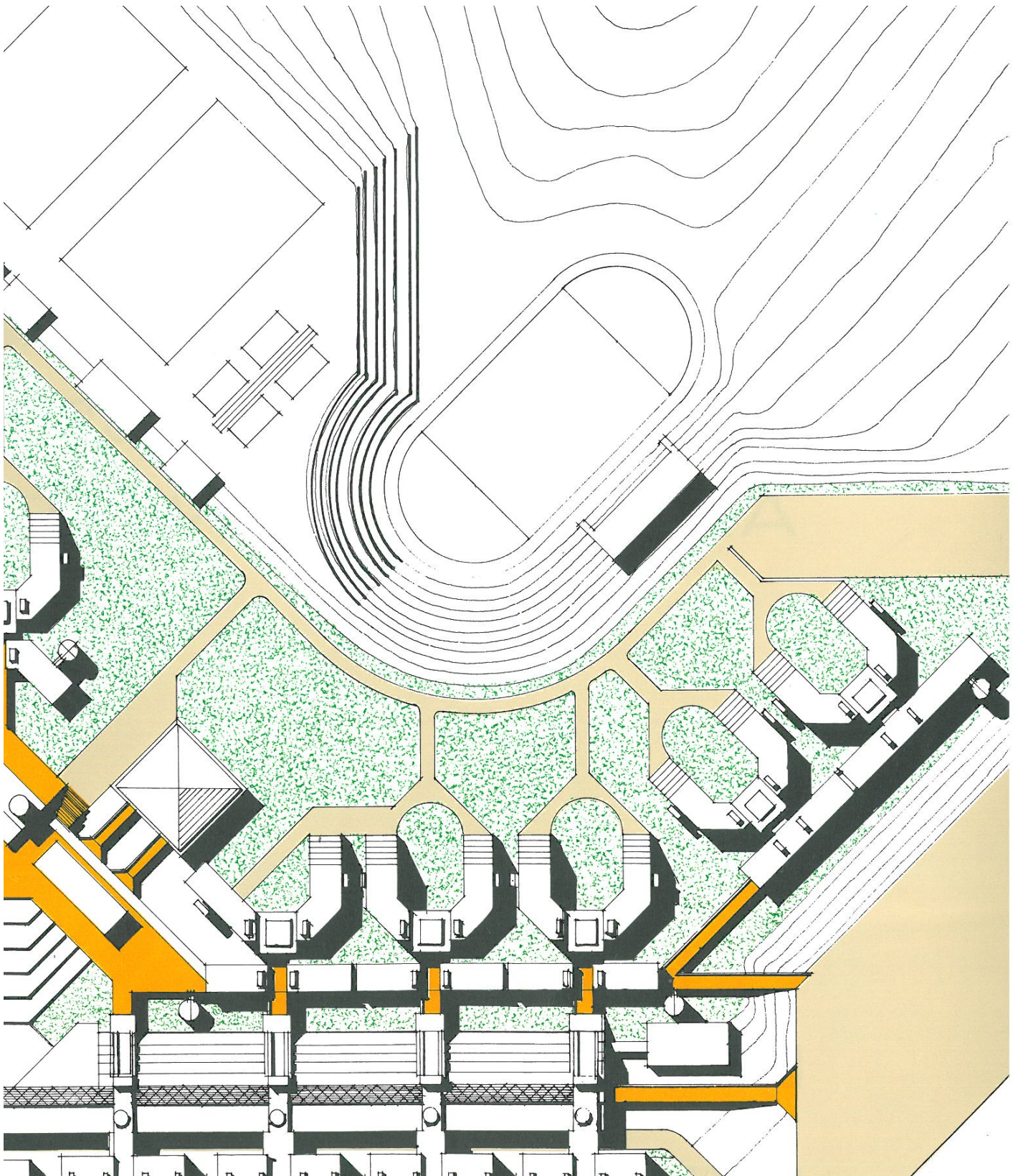


OSMOND LANGE ARCHITECTS SOUTH AFRICA

# EDUCATION PROJECTS PROFILE







# CONTENTS



## 01 | INTRODUCTION

Office Locations .....	06
Overview .....	08
Key Personnel .....	09
Services Offered .....	10

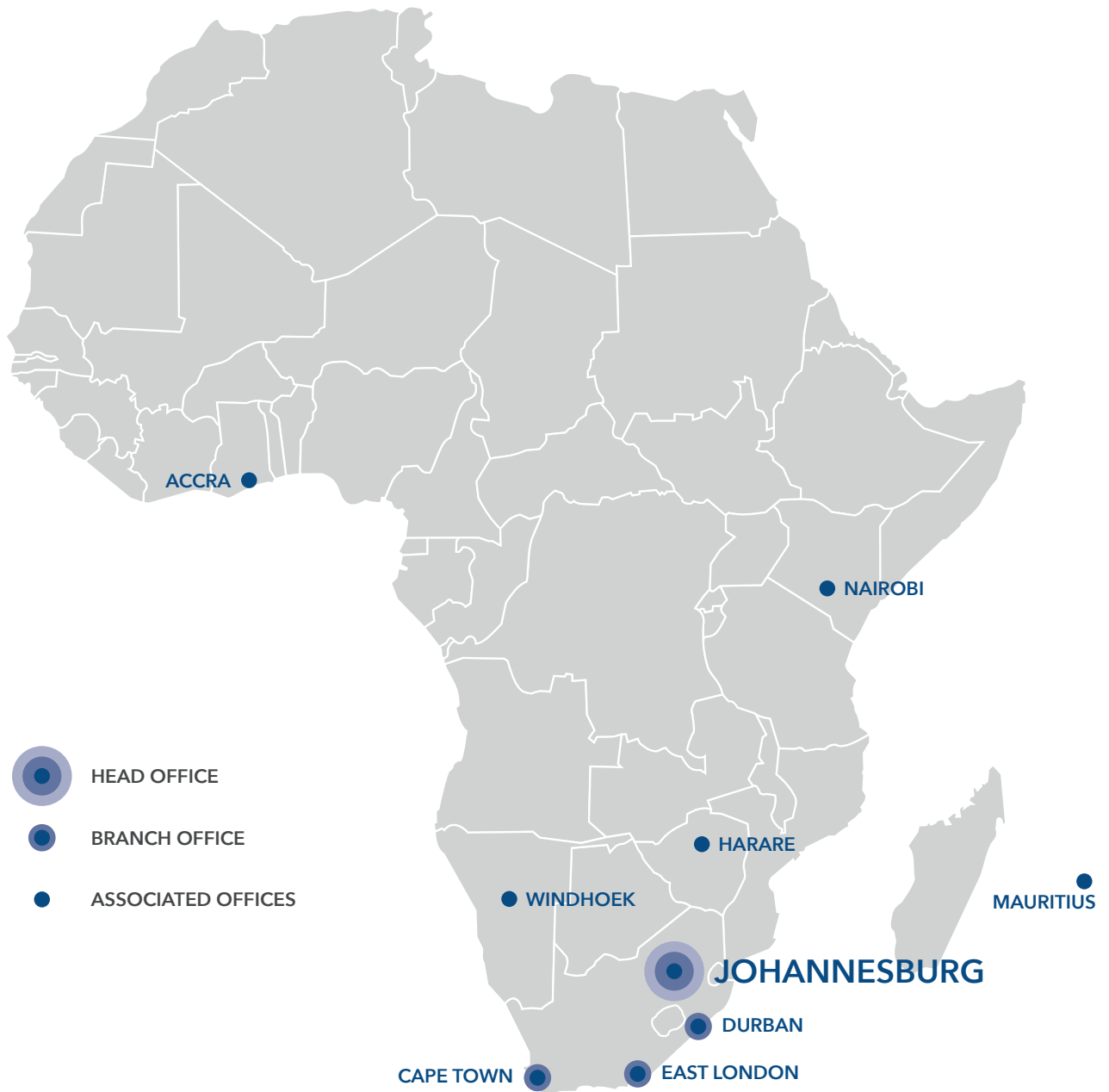
## 02 | EDUCATION PROJECTS



Walter Sisulu University - Mthatha Campus.....	12
Walter Sisulu University - Butterworth Campus .....	13
Walter Sisulu University - Potsdam Campus.....	13
Walter Sisulu University - Academic Campus Proposal .....	14
Durban University of Technology - Student Residences .....	14
University of Fort Hare - Alice & Bhisho Campus .....	15
Central University of Technology - Bloemfontein & Welkom Campuses .....	16
Sekhukhune TVET College .....	16
Vaal University of Technology - New Sedichem Chemical Building, Sebokeng Campus .....	17
Trinity House Schools - Palm Lakes Estate .....	18
Thomas More College.....	19
La Mercy Maths, Science & Technology Academy .....	20
Border Technikon - Technikon and Residences .....	21
Masakhane Pre-School.....	22
Nkonkwana Junior Primary School.....	23
Siyanda Senior Primary School .....	24
Merriefield Astro Players' Area .....	25
Umzimyathi Schools .....	26
Early Childhood Development Classrooms.....	27
All Saints College.....	28
Zanzibar Mission Centre Bible School .....	28
Koron Village School .....	29
Ukukhanyakomsinga Special School .....	29
Education Projects Summary.....	30



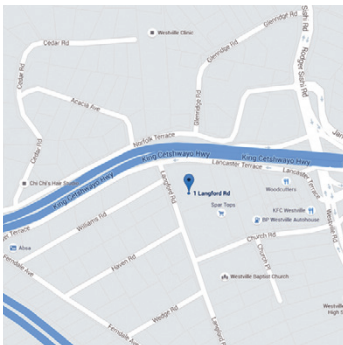
# OFFICE LOCATIONS





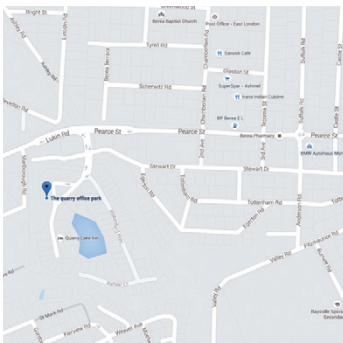
## JOHANNESBURG (HEAD OFFICE)

3 Melrose Boulevard,  
Melrose Arch, Johannesburg  
Tel: +27 11 994 4300  
info@o-l.co.za



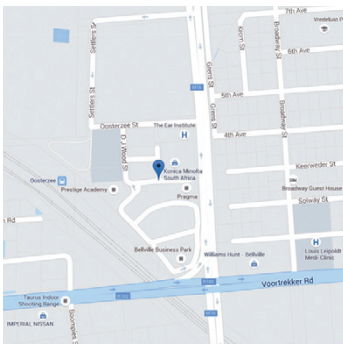
## DURBAN

1 Nelson Road, 1st Floor Upminster Building,  
Essex Gardens, Westville  
Tel: +27 31 266 0750  
durban@o-l.co.za



## EAST LONDON

1st Floor, Pilot Mill House,  
The Quarry, Selborne  
Tel: +27 43 721 0033  
els@o-l.co.za



## CAPE TOWN

Tyger Terraces II,  
DJ Wood Way, Bellville  
Tel: +27 21 948 1877  
cpt@o-l.co.za

# OVERVIEW

## ABOUT

Osmond Lange was established in 1929 and is one of the larger architectural practices in South Africa, with offices in Johannesburg, Durban, East London and Cape Town. The company has built up extensive design and technological expertise specialising in large projects and has actively participated in some of the largest joint ventures in South Africa as lead consultants. The practice blends architecture, urban design and development management skills to deliver an integrated package of professional services to its clients.

Osmond Lange has undertaken work across various sectors, including residential, retail, industrial, education, healthcare and commercial offices with a particular specialisation in relation to the urban design and planning of integrated mixed use commercial precincts.

Osmond Lange Architects South Africa (Pty) Ltd is a new entity established in 2018 within the OL/Ikemeleng group of companies with a specific focus on projects and clients located within South Africa. The company shares the same Executive Management team and draws upon the same pool of staff and technical resources as the other Group entities.

---

## KEY FACTS

6 Directors | Number of Staff: 80+ | Four Offices in South Africa | Associated Offices in Ghana, Kenya, Mauritius, Namibia & Zimbabwe

---

## BROAD- BASED BLACK ECONOMIC EMPOWERMENT

Osmond Lange Architects South Africa is a Level 1 Contributor to Broad-Based Black Economic Empowerment with 51% Black Ownership, measured in terms of the Broad-Based Black Economic Empowerment Act (53/2003) of the Republic of South Africa.

## SUSTAINABLE BUILDINGS DESIGN

Osmond Lange is amongst the leading proponents of sustainable design. One of our recent projects, 40 on Oak at Melrose Arch, was the first Multi-Unit Residential building to achieve a 4-Star Green Star Rating. Several of our team members are Green Star Accredited Professionals.

# KEY PERSONNEL

## DIRECTORS

### DAVID CURRIE



David graduated from the University of Witwatersrand in 1992 and joined Osmond Lange in 1999, where he played senior role in the management and design of Melrose Arch. David's expertise ranges from large industrial complexes, shopping centres and office buildings, to hospitals and airports. David relocated to East London in 2007 to provide leadership at Osmond Lange's founding

### FRANÇOIS NORTJÉ



François qualified as an architect in 1989, and worked for several highly regarded architectural design firms, prior to joining Osmond Lange in 2015. His expertise spans mixed use developments, commercial offices, industrial and residential projects.

### GRAHAM WILSON



Graham has 35 years' architectural experience and numerous years with Osmond Lange. His interest in the built environment has progressed to focus extensively on Urban Design and Master Planning of mixed-use developments civic centres, universities, office buildings, shopping centres and hospitals. Graham's passion is the response new buildings have to public space and the creation of delight in dense, walkable, livable

### JONATHAN MANNING



Jonathan has over 20 years' experience as an architect with specific skills and expertise in Urban Design and Public Works including work on Constitution Hill, Rea Vaya Bus Rapid Transit and O. R. Tambo International Airport. With a global and multi-cultural upbringing, Jonathan is passionate about the power of architecture to improve quality of life, celebrate cultural identity and ultimately transform society.

### RIDWAAN BHANA



Ridwaan is a Senior Architectural Technologist, specialising in transport, public works, commercial and residential projects. With a National Diploma in Architecture from the Technikon Witwatersrand, Ridwaan's career has spanned over 27 years, incorporating a variety of projects including the Rea Vaya Bus Rapid Transit, mosques, schools and multiple projects at O. R. Tambo International Airport.

### SIBUSISO MAUZE



Sibusiso is a Professional Architect with over 20 years' experience. Studying at the University of Natal and growing up in Umlazi has made Sibusiso passionate about how architecture can improve the lives of the less fortunate. Throughout his time at Osmond Lange, he has channelled this interest into multiple Public Works, including several Inner City renewal projects. Latterly he has developed specialised expertise in relation to Retail and Commercial Office Interiors.

## CONSULTANTS

### DEON VAN ONSELEN



Deon, a Professional Architect with 27 years' experience, has specialised in all aspects of the profession with focus on design and team leadership. His expertise in Healthcare and Public Works has been demonstrated in various works throughout his 20 years as an Osmond Lange Director. Recent major projects include Thelle Moegerane Hospital and the Heineken Sedibeng Brewery.

### VICTOR UTRIA



Victor was born in Colombia and obtained his degree in Architecture from the Federal University of Rio de Janeiro, Brazil. He has more than 35 years' experience in a wide variety of commercial, residential, industrial and institutional projects. Extensive international travel and fluency in English, Spanish and Portuguese, allow him to bring extra depth to his work.

# SERVICES OFFERED

## ARCHITECTURAL SERVICES

Standard Architectural Services, including:

Inception | Concept & Viability | Design Development | Documentation & Procurement | Construction Monitoring | Close-Out

Development Management

Principal Agency

Heritage Consultancy

Additional services, including:

Needs Assessment and Brief Development | 3D Modelling and Rendering | Preparation of Marketing Material

## URBAN DESIGN SERVICES

Urban Design Frameworks and Masterplans | Urban Development Frameworks (UDFs)/ Spatial Development Frameworks (SDFs) | Urban Design & Land Use Guidelines | Development Strategies

Architectural Guidelines | Transit-Oriented Development | Public Environment Upgrades

Design of Parks and Green Spaces | Design of Street Furniture (benches, litter bins, bollards etc.)

## FIELDS OF EXPERTISE

Master planning - Education Campuses, Mixed Use Precincts, Housing Developments, Industrial Estates

Commercial - Office Buildings, Office Interiors

Retail - Shopping Centres, Retail Interiors

Transport - Airports, Bus Rapid Transit, Railway Stations, Taxi Facilities

Urban Renewal - Public Environment Upgrades, Parks, Markets

Residential - Upmarket, Sectional Title, Affordable

Public Sector- Hospitals, Clinics, Police Stations

Industrial - Manufacturing Plants, Warehouses, Logistics Buildings



# WALTER SISULU UNIVERSITY

## MTHATHA CAMPUS

Mthatha | Eastern Cape | South Africa

**Date:**  
1977 - 1979

**Client:**  
National Department of  
Higher Education and  
Training

**Project Value:**  
ZAR 20 Million (1977  
value)

**Collaborators:**  
N/A

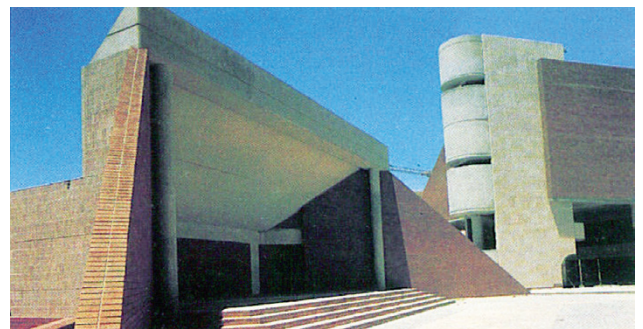
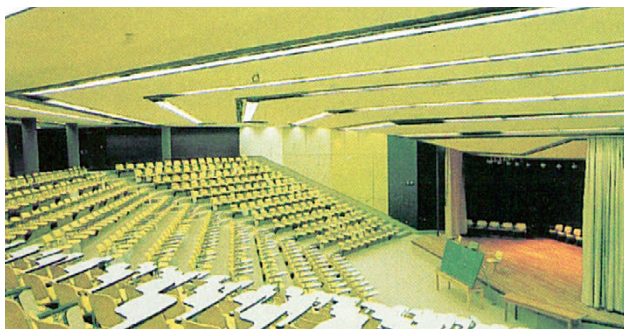
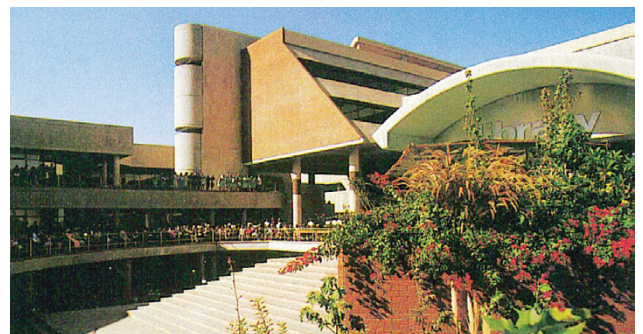
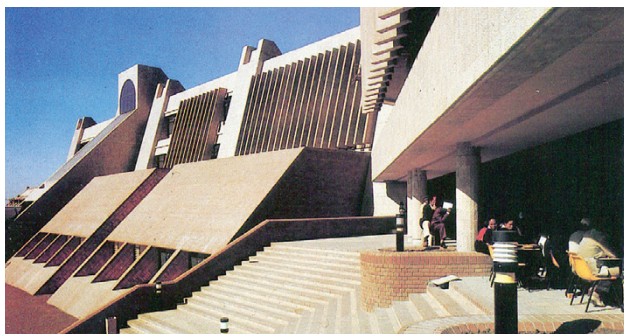
Osmond Lange led the master planning process in the 1970s for the original University of Transkei campus in Mthatha, which today forms part of Walter Sisulu University. The original campus masterplan provided for eight to ten thousand students.

### Phase 1:

- First five faculties
- Arts
- Economic Sciences
- Natural Sciences
- Law
- Education

### Phase 2:

- Tower block including council room, senate chamber, facilities for student registration, administration, large staff tea room, gymnasium, student associations offices, didactic centre for the production of teaching material and teacher training
- Two Student Residences accommpdating 500 students.
- Sports Facilities



# WALTER SISULU UNIVERSITY

## BUTTERWORTH CAMPUS

Butterworth | Eastern Cape | South Africa

Date:  
1985

Master Planning and building design for the original Eastern Cape Technikon campus in Butterworth, now part of Walter Sisulu University.

Client:  
Eastern Cape Technikon



# WALTER SISULU UNIVERSITY

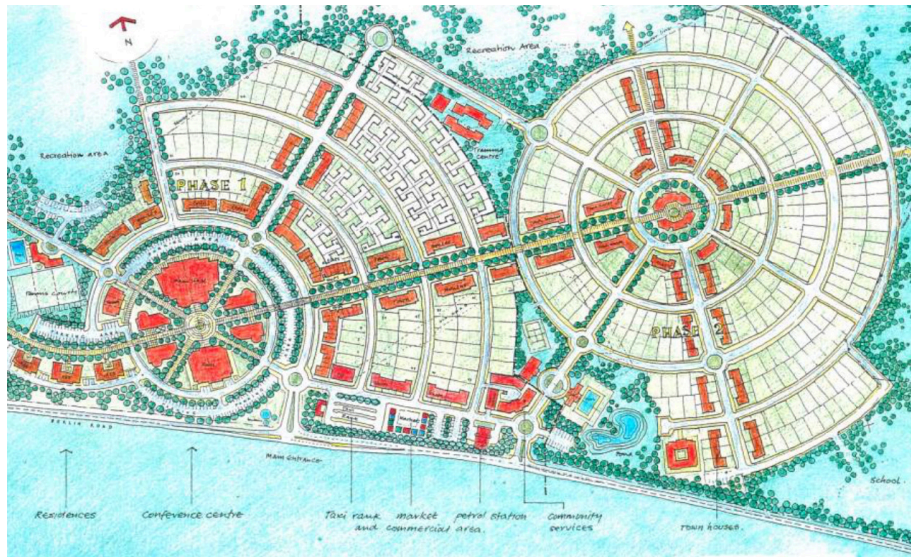
## POTSDAM CAMPUS

Potsdam | Eastern Cape, South Africa

Date:  
Completed 1992

Master Planning and design of multiple buildings for the original Border Technikon campus in Potsdam, now part of Walter Sisulu University. Buildings designed include Administration Block, Teaching Facilities, Dining Facilities and Student Residences.

Client:  
Department of Higher  
Education and Training



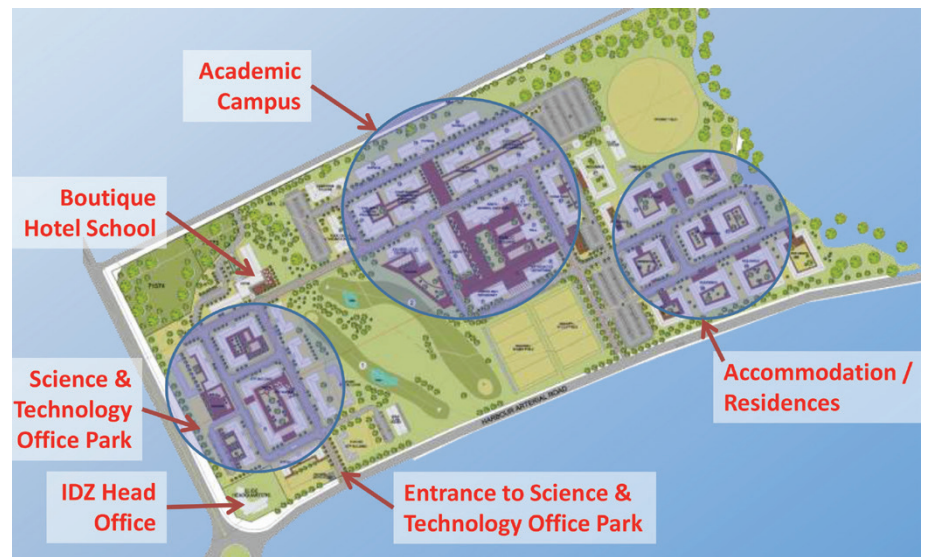
# WALTER SISULU UNIVERSITY

## ACADEMIC CAMPUS PROPOSAL

East London | Eastern Cape | South Africa

**Client:**  
East London IDZ

This design proposal for the Walter Sisulu Campus in East London incorporates Masterplanning for an Academic Campus, Accommodation and Residences, a Science and Technology Office Park, Head Offices for the IDZ and a Hotel School. It incorporates internal courtyards, landmark entrances and multi-use living.



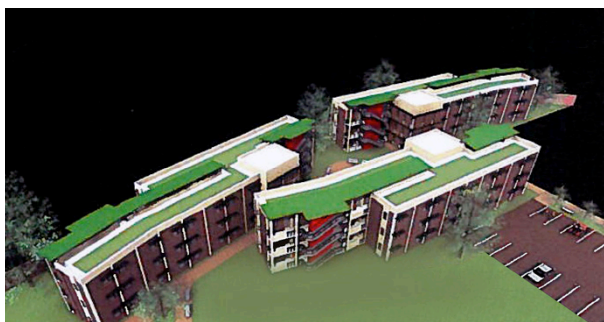
# DURBAN UNIVERSITY OF TECHNOLOGY

## STUDENT RESIDENCES

Durban | KwaZulu-Natal | South Africa

**Client:**  
Durban University of  
Technology

This design proposal for a Student Residential Development at DUT's Steve Biko campus adopts a design standard which is cost effective yet robust, and energy efficient. The proposed design is based on a conceptual 21sqm and multiplied over the required 144 units into a collection of blocks. Each block is a maximum of 3 stories. Each unit is designed to provide efficient space for students to use whilst at the training centre. The focus is to allow maximum natural light to each unit. The long, thin units allow for pockets of landscaping between the blocks for students to use. The building achieved a 4 star Green Star rating.



# UNIVERSITY OF FORT HARE

## ALICE & BHISHO CAMPUS

Alice & Bhisho | Eastern Cape | South Africa

Date:  
Completed 1991

Client:  
Department Higher  
Education and Training



The university of Fort Hare is the oldest, historically black university in South Africa, having celebrated its centenary anniversary in 2016.

### Alice Campus

The main campus is situated in Alice, 120 kilometres west of a small town in a rural setting and the capital of Nkonkobe Municipality. Osmond Lange were responsible for the refurbishment of the Administration Building, as well as a New Indoor Sports Centre, Zoology Block and Student Residences.

The SAIA conferred an Award of Merit on the Staff Amenities Building in 1985, as an outstanding example of architecture. The citation acknowledged "the way in which the building recognises and enhances the existing major space and complex".

### Bhisho Campus:

Osmond Lange was responsible for the Campus Master Plan and the Architectural Design of a New Administration Building, Teaching Facilities and Canteen Building.



# CENTRAL UNIVERSITY OF TECHNOLOGY

## BLOEMFONTEIN & WELKOM CAMPUSES

Bloemfontein | Free State | South Africa

Date:  
2016

Client:  
Central University of  
Technology

The design for student accommodation at CUT is based on the concept of apartment blocks arranged around an enclosed courtyard which is easily secured allowing the students to make use of an outdoor living area. Student apartments included 6 rooms, a lounge, mini kitchen, IT rooms and offices.



# SEKHUKHUNE TVET COLLEGE

## DR C.N. PHATUDI CAMPUS

Tubatse | Limpopo

Date:  
1991

Client:  
Dr C.N. Phatudi College  
of Education

Osmond Lange undertook Master Planning and The Architectural Design of all original campus buildings for the then Dr C.N Phatudi College of Graduation, which later became the C.N. Phutudi Campus of Sekhukhune TVET College.



# VAAL UNIVERSITY OF TECHNOLOGY

NEW SEDICHEM CHEMICAL BUILDING, SEBOKENG CAMPUS

Sebokeng | Gauteng | South Africa

**Client:**  
Sedichem (funded  
by Sedibeng District  
Municipality)

**Contract Value:**  
R7 million

Sedichem is a facility aimed at encouraging enterprise development in the Chemical sector, offering shared facilities and joint marketing to SMMEs. Funded by the Sedibeng District Municipality and comprising laboratories, offices and exhibition space, this new R7 million building is located at the Sebokeng Campus of the Vaal University of Technology. A planned second phase will include a double volume exhibition drum and a canteen



# TRINITY HOUSE SCHOOLS

PALM LAKES ESTATE

Tinley Manor | KwaZulu-Natal | South Africa

**Project Value:**  
**ZAR 170 Million**



Tinley Manor lies just north of Ballito along KwaZulu-Natal's north coast. A new housing development, Palm Lakes Estate was established a few years ago and makes provision for schools, recreation, mixed use, commercial and retail property development.

ADvTech Schools (Pty) Ltd appointed Osmond Lange to design and monitor the construction of their pilot Trinity House School in KZN. The school includes a pre-primary, preparatory (primary) and College level (high) school.

The pre-primary school accommodates 350 pupils, while the prep school and college accommodate 700 pupils each. It is envisaged that hostels will be developed at a later stage.

Sport is a focal point of the school brand and maximising land use to accommodate the various sporting codes on offer at Trinity House, Palm Lakes was challenging considering the site was heavily sloped with a high clay content.

The campus development represents a total capital investment of R170 Million.



# THOMAS MORE COLLEGE

Kloof | Kwazulu-Natal | South Africa

Date:  
2005

Client:  
Thomas More College

Thomas More college offers Grade 00 to matric and is co-ed. From 55 High School Boys in 1962, Thomas More College had grown to a student population of nearly 1100 by the end of 2004. In 1974, girls were admitted to Thomas More College and in 1993 the school opened its doors to the first primary school pupils. Originally the entire school was housed in the Great House. Later a derelict factory was converted into what is now the College It/Media Centre. The Farm House was acquired as part of Mitchell Farm in 1966 and housed the Boarders.

The scope of the project completed by Osmond LAnge in 2005 was as follows:

**Classroom additions 2005:**

- JP block
- A Centre for Science and the Arts including a hall
- The existing classrooms in the Farm House were moved out to make way for the Primary School's administrative offices
- New classrooms for Grade 00 pupils

**New fields added:**

- New hockey field (Leffler Field)
- General purpose field (Boardman Field)
- Three new netball courts



# LA MERCY MATHS, SCIENCE & TECHNOLOGY ACADEMY

La Mercy | KwaZulu-Natal | South Africa

**Date:**  
2014 - Ongoing

**Client:**  
COEGA Development  
Corporation

**Project Value:**  
ZAR 225 403 450

**Collaborators:**  
Thubalethu Architects

The La Mercy Maths Science & Technology Academy entails the redevelopment of an existing school site situated north of Durban into a "Centre of Excellence" for boys and girls studying in Grades 8 to 12. The project includes a multipurpose hall and fully functioning kitchen and dining hall for 280 seats. It also includes specialised physical science and Information Technology Laboratories, as well as residential hostels to accommodate 600 learners.



# BORDER TECHNIKON - TECHNIKON AND RESIDENCES

King Williams Town | Eastern Cape | South Africa

Date:  
Completed 1992

Client:  
Department Higher  
Education and Training



# MASAKHANE PRE-SCHOOL

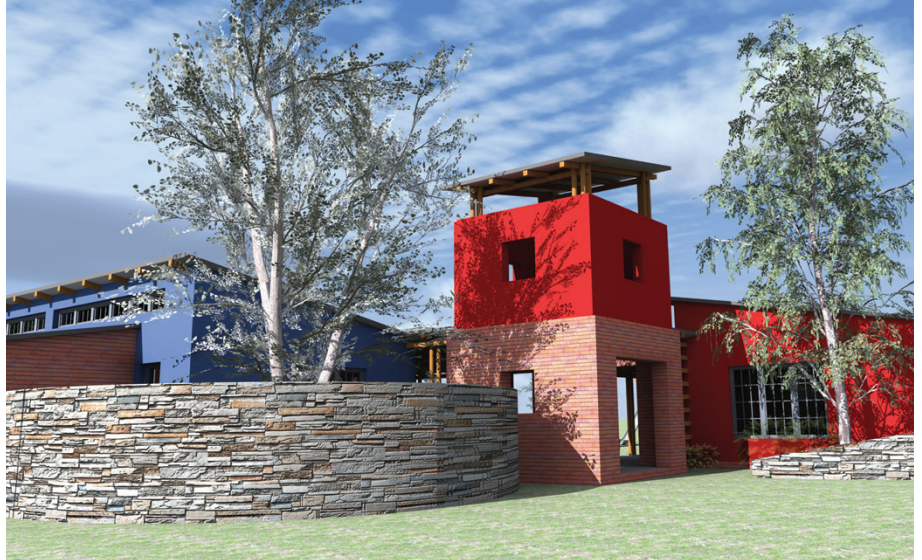
Masakhane | Mpumlanga | South Africa

Date:  
Completed 2013

Client:  
Transnet Capital Projects

Project Value:  
ZAR 1.5 Million

The Masakhane Pre-School includes new classrooms, ablutions and an administrative building developed by Transnet Capital Projects as a part of their Socio-Economic Development Programme.



# NKONKWANA JUNIOR PRIMARY SCHOOL

Willowvale | Eastern Cape | South Africa

Date:  
2014

New Junior Primary School in the Amathole District.

Client:  
Industrial Development  
Corporation

Project Value:  
ZAR 20 Million



# SIYANDA SENIOR PRIMARY SCHOOL

Butterworth | Eastern Cape | South Africa

Date:  
2017

Client:  
Eastern Cape  
Department of Public  
Works

Project Value:  
ZAR 22 Million

Replacement of dilapidated, unsafe timber classrooms with a complete new brick school comprising Administration Building, Dining and Kitchen building, Library and Media Centre, an ECDC classroom and playground, two science laboratories, seven standard classrooms and the necessary VIP latrine facilities. The various school buildings were carefully arranged to create a series of interconnected courtyard spaces – linked with a central covered circulation spine.



# MERRIFIELD ASTRO PLAYERS' AREA

East London | Eastern Cape | South Africa

Date:  
2019

Client:  
Merrifield Preparatory  
School and College

Project Value:  
ZAR 400 000

A new Hockey Astro field was master-planned by Osmond Lange Architects and duly constructed on a hill site, with significant environmental constraints but with spectacular views. The Players' Area building was designed to create a lightweight, transparent structure on the southern edge of the Astro field - with a dramatic oversailing roof - such that the Players and the Officials were suitably protected from the elements and were not cut off from the surrounding context. The blue carpet from the Astro was continued as a floor finish and the benches were designed with cantilevered steel bracket supports.



# UMZIMYATHI SCHOOLS

Umzimyathi District | KwaZulu-Natal | South Africa

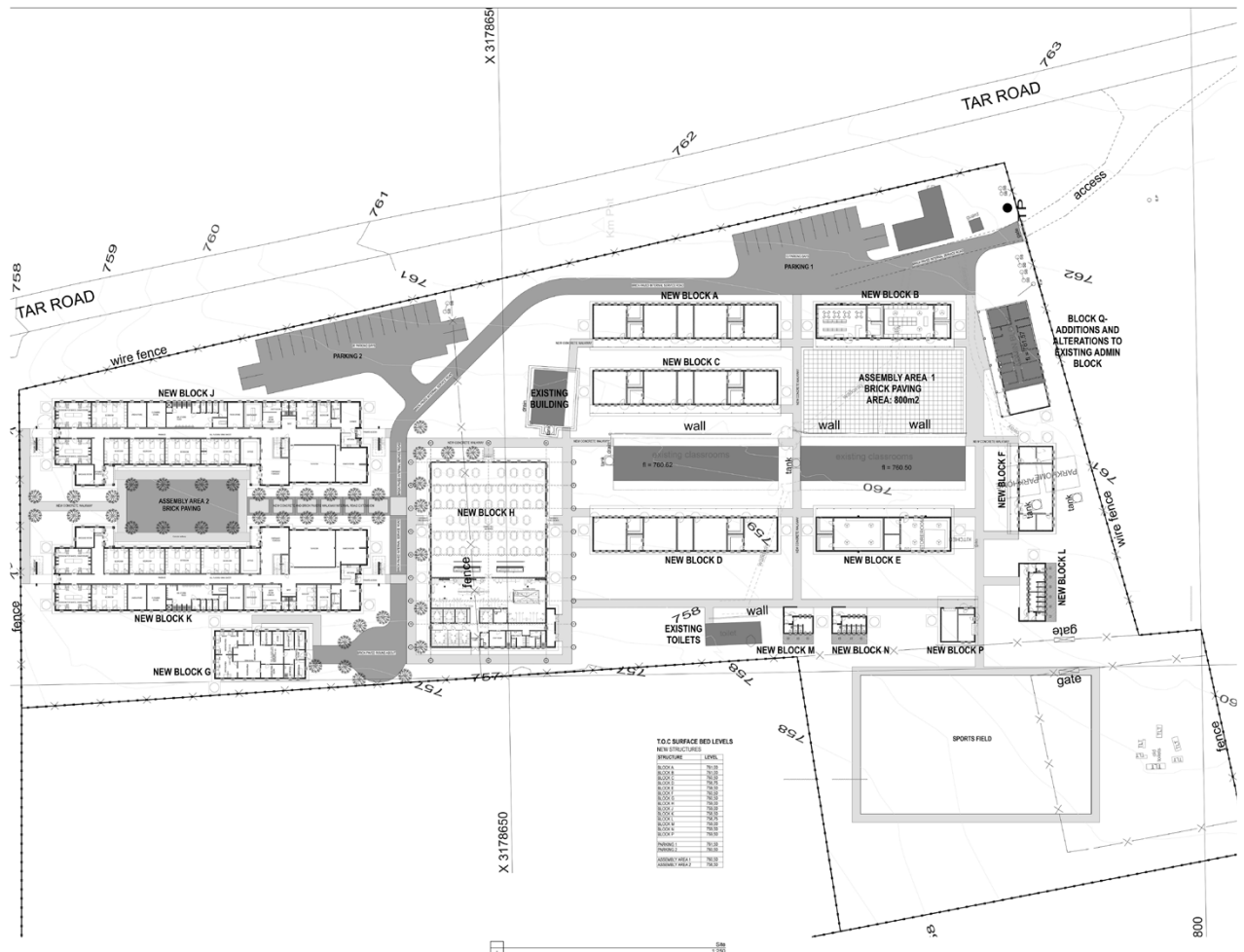
**Date:**  
Completed 2014

**Client:**  
Coega Development  
Corporation

**Project Value:**  
ZAR 145 Million

The appointment was for 3 clusters of ECD (Early Child Development) classrooms and 3 new schools of which one is a special needs school in the Umzimyathi District - Dundee and Greytown area Kwa Zulu Natal. Osmond Lange Architects has developed the new schools and ECD's according to the Department of Education specifications, with minor modifications in keeping with latest building and energy efficiency trends to suit the clients budget and needs.

1. Ukhanyakomsinga Special School LSEN / Upgrades & Addition
2. Phumelela Secondary School Upgrades & Additions / New school
3. Mbongeleni Primary School Upgrades & Additions / New school
4. Cluster 1 (Siyamthanda, Mhlazane and Qedukoma Primary Schools) ECD Centres
5. Cluster 2 (Endumeni and Isibukosabasha Primary Schools) ECD Centres
6. Original Cluster 3 (Ntabende and Mhlumba Primary Schools) ECD Centres
7. Original Cluster 4 (Ebuhlebemfundo, Pomeroy and Mahlaba Primary Schools) ECD Centres
8. Replacement Cluster 3 (Thulasizwe and Mhlumba Primary Schools) ECD Centres
9. Replacement Cluster 4 (Osuthu, Phumela and Ithubaletu Primary Schools) ECD Centres



# EARLY CHILDHOOD DEVELOPMENT CLASSROOMS

KwaZulu-Natal | South Africa

Date:  
Completed 2013

Client:  
Independent  
Development Trust

Project Value:  
ZAR 10,6 Million

## Early Childhood Development (ECD) Classrooms

Osmond Lange Architects' appointment with IDT covered the designs of new ECD classroom extensions to existing Primary Schools in Kwa Zulu Natal. The implementation of Department of Education standard classroom design was applied with minor modification in keeping with current building trends and materials enabling ease of construction and accuracy as small size building contractor would be tendering for the contracts issued by Independent Development Trust.

The following projects were completed:

- |                        |                       |                        |
|------------------------|-----------------------|------------------------|
| 1. Saphumelela Primary | 5. Lethokole Primary  | 9. Mbovu Primary       |
| 2. Sawpits Primary     | 6. Khulani Primary    | 10. Emangadini Primary |
| 3. Vilikazi Primary    | 7. Phembiszwe Primary |                        |
| 4. Enkukwini Primary   | 8. Ngongomisa Primary |                        |



# ALL SAINTS COLLEGE

Bhisho | Eastern Cape | South Africa

**Client:**  
All Saints College

**Project Value:**  
ZAR 14 Million

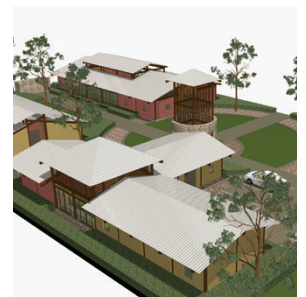
All Saints College is a senior school catering for classes from Grade 8 to Grade 12 and offering a high standard of education initially to disadvantaged students. There are boarding facilities for more than two hundred students in two residences, a refectory with fully equipped kitchen, an administration block, and two teaching blocks- one concentrating on the sciences and the other on language and the arts. Each block has its own raked lecture theatre. The scheme was developed through a Master Plan which included a future chapel, library and fine art block. There are seven residences on the property for teaching staff. As far as sports are concerned a large playing field for hockey, soccer and athletics has been constructed cut into the slope of the site, and flanked by tennis, squash and netball courts and a small swimming pool.



# ZANZIBAR MISSION CENTRE BIBLE SCHOOL

Tunguu Area | Zanzibar

The design for the Mission Centre in Zanzibar provided for a community school with accommodation for classrooms, visitor's house, covered outdoor area and a landmark clocktower.



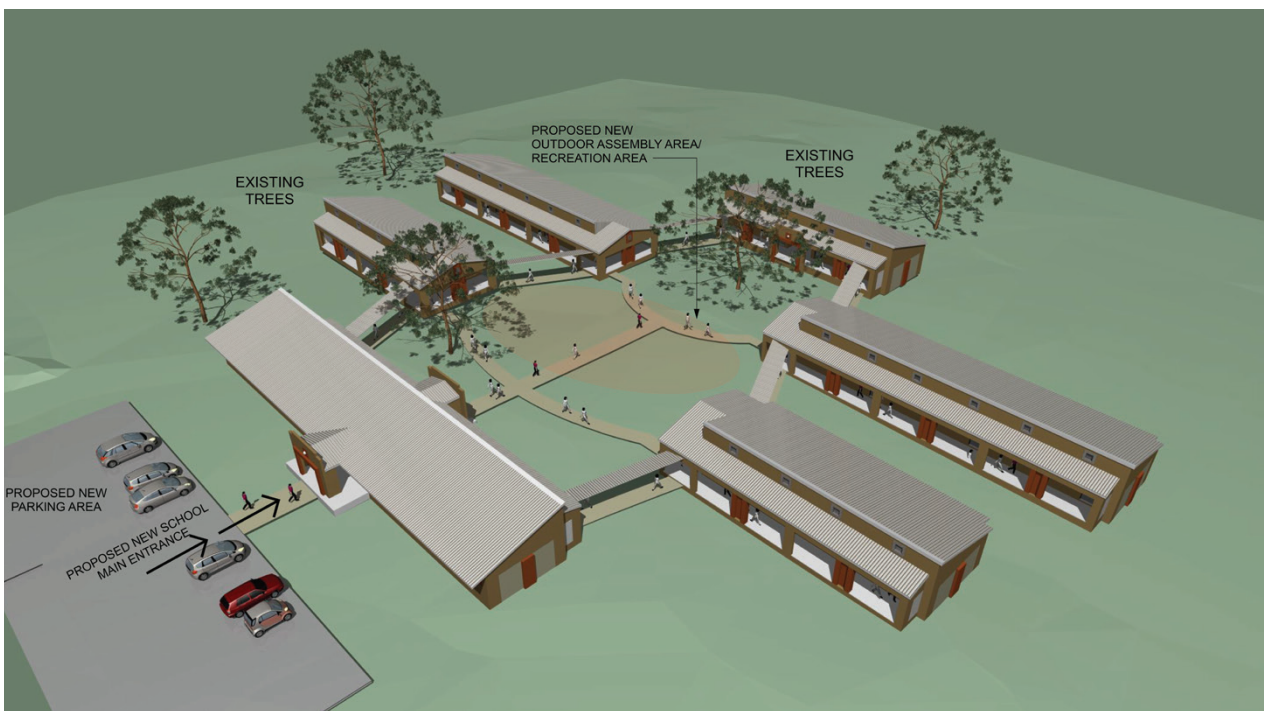
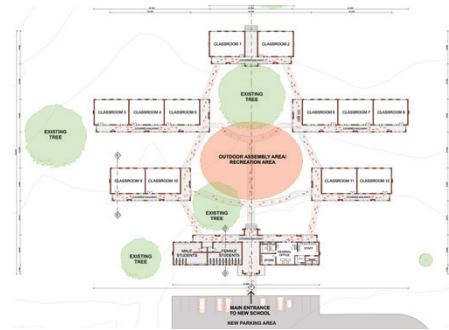
# KORON VILLAGE SCHOOL

Siguiri Mine | Republic of Guinea | West Africa

**Client:**  
AngloGold Ashanti

Osmond Lange's scope included the following:

- Master Planning of Village Expansion
- Design of Houses
- Design of Offices
- Design of Amenity Buildings (Recreation Club, Supermarket)
- New School Buildings



# UKUKHANYAKOMSINGA SPECIAL SCHOOL

Umzinyathi | KwaZulu-Natal | South Africa

**Date:**  
2015 - 2018

**Client:**  
COEGA Development Corporation

**Project Value:**  
ZAR 111 452 258.84

Construction of a new school designed for children with special needs. Consisted of new special classrooms, computer rooms, library, laboratories, activity room, offices, cleaner store, general store and groundsman's storeroom. Additions and Alterations to existing admin block, laundry services, kitchen and dining hall and hostel blocks

# EDUCATION PROJECTS SUMMARY

## UNIVERSITIES

### Walter Sisulu University

- Mthatha Campus - Master Planning (originally for University of Transkei), Faculties of Arts, Economic Sciences, Natural Sciences, Law and Education, Administration Building, Lecture Blocks, Maintenance and Service Centre, Student Residences, Sports Facilities;
- Butterworth Campus - Master Planning (Originally for Eastern Cape Technikon), Lecture facilities and Administration Building;
- Potsdam Campus - Teaching Facilities, Administration, Dining Facilities, Student Residence;
- East London IDZ - Proposal for new Academic Campus and Science & Technology Park.

### Durban University of Technology

- Student Housing campus in Mount Edgecombe

### Rhodes University

- Grahamstown Campus (Eden Grove Building) - Service Centre, Lecture Theatres, Seminar Rooms, Library, Offices and Archives;
- East London Campus - Alterations and extensions to existing teaching and administration buildings.

### University of Fort Hare

- Alice Campus - Administration refurbishment, Indoor Sports Centre, Zoology block, Staff Amenities and Student Residences;
- Bhisho Campus - Campus Master Planning, Administration Building, Teaching Facilities, Canteen.

### University of Zululand

- Umlazi Campus - Master Plan for new Campus, Design & construction of Phase 1 Buildings

### North-West University

- Mafikeng Campus - Multipurpose Great Hall, Student Centre and Student Union Building

### University of Botswana

- Gaborone Campus - Great Hall, Business Centre, Art Centre, Recreation Centre and Swimming Pool

### University of the Witwatersrand

- West Campus - Design Proposal and Heritage Consultancy for proposed alterations to Wits Club

### Central University of Technology

- Bloemfontein Campus - Student Residences

### University of KwaZulu-Natal

- Westville Campus - Refurbishment of H1 and J Blocks;
- Nelson R Mandela School of Medicine Campus - Alterations to Kwa-Zulu Natal Research Institute for TB and HIV (K-RITH)

## TVET COLLEGES

### Esayidi TVET College

- uMzimkulu Campus - Design and construction documentation for all Campus Buildings

### Ingwe TVET College

- Mount Frere Campus - Master Planning and Buildings for a New Teacher Training Facility
- Nqunqushe Campus - Master Planning and Buildings for a New Technical College

### King Hintsa TVET College

- Teko Campus - Master Planning and New Buildings

### Letaba TVET College

- Maake Campus - Master Planning and Buildings for a New Teacher Training Facility
- Modjadji Community Campus - Master Planning and Buildings for a New Teacher Training Facility

### Ehlanzeni TVET College

- Mapulaneng Campus - Master Planning and New Buildings for a new Technical College

### Sekhukhune TVET College

- C.S. Barlow Campus - Master Planning and New Buildings
- Mamokgalake Chuene College of Education - Master Plan for Phase 2 and New Buildings
- Dr. C.N. Phatudi College of Education - Master Planning and Buildings for a New Teacher Training Facility

### Mopani South East TVET College

- Sir Val Duncan Campus - Master Planning and New Buildings

### Taung Agricultural College

- Master Planning and Buildings for a New Agricultural College

### Mastec Institute, Seshego (former Kwena Molota College of Education)

- Master Planning and Buildings for a New Teacher Training Facility

#### **Madzivhandila College of Agriculture**

- Master Planning and Buildings for a New Agricultural College

#### **Tsolo Agriculture College**

- Master Planning and Buildings for a New Agricultural College

#### **Tshwane South TVET College**

- Odi Campus – Master Planning and New Buildings for a new Technical College

#### **Port Elizabeth TVET College**

- Appointed to Panel of Architects for 2018-2021

### **SCHOOLS**

#### **Gauteng**

- Mphethi Mahlatsi Secondary School - Orange Farm
- Witkoppen Primary School - Randburg
- Mncube Primary School - Soweto
- Rebontsheng Primary School - Vosloorus
- Olievenhoutbosch Christian School - Centurion

#### **KwaZulu Natal**

- Trinity House School – Palm Lakes Estate, Tinley Manor
- Thomas More College - Kloof
- Nomakhaladi Primary School - Ilembe,
- Dingizwe Primary School - Ilembe
- Siyacothoza Primary School - Ilembe
- Mankayiyana Primary School - Ilembe
- Myumase Primary School - Ilembe
- Nsungwini Primary School - Ilembe
- Inkonjane Senior Secondary School - Ilembe
- Mzobanzi Junior Secondary School - Ilembe
- Saphumelela Primary School - Adams Mission
- Sawpits Primary School - Madundube
- Dr BW Vilikazi Primary School - Groutville
- Enkukwini Primary School - KwaDukuza
- Lethokole Primary School - Amalanga
- Khulani Primary School - Tugela Ferry
- Phembiszwe Primary School - Ntuzuma
- Ngongomisa Primary School - Umbumbulu
- Mbovu Primary School - Nungwane
- Emangadini Primary School - Nungwane
- Ukhanyakomsinga Special School
- Phumelela Secondary School - Pomeroy
- Mbongeleni Primary School - Ngome
- Siyamthanda Primary School - Nquthu
- Mhlazane Primary School - Isigubudu
- Qedukoma Primary School - Nquthu
- Endumeni Primary School - Sibongile
- Isibukosabasha Primary School - Nquthu

- Ntabende Primary School - Greytown
- Mhlumba Primary School - Tugela Ferry
- Ebuhlebemfundo Primary School - Pomeroy
- Pomeroy Primary School - Pomeroy
- Mahlaba Primary School - Pomeroy
- Thulasizwe Primary School - Nquthu
- Mhlumba Primary School - Tugela Ferry
- Osuthu Primary School - Bululwane
- Phumela Primary School - Ezingulubeni
- Ithubalethu Primary School - Nzimane
- La Mercy Maths & Science Academy - La Mercy

#### **Free State**

- Masakhane Pre-School - Vrede

#### **Limpopo**

- Helen Franz Special School - Bochum, Blouberg

#### **Eastern Cape**

- All Saints College - Bhisho
- Cofimvaba Village - Cofimvaba
- Gando Junior Secondary School - Cofimvaba,
- Mvuso Junior Secondary School - Cofimvaba,
- Ncuncuza - Cofimvaba
- Nobuzwe Senior Primary School - Cofimvaba
- Hombe Junior Secondary School - Lusikisiki
- Kwazisamele - Lusikisiki
- Mbotyi Senior Primary School - Lusikisiki
- Mnceba Senior Secondary School - Lusikisiki
- Mowa Senior Primary School - Lusikisiki
- Ntabankulu Junior Secondary School - Lusikisiki,
- Samaria School - Lusikisiki
- Lerato Junior Primary School - Mount Fletcher
- Mahlake Junior Secondary School - Mount Fletcher
- Motlatsi Junior Primary School - Mount Fletcher,
- Mpumalanga Junior Secondary School - Mount Fletcher
- Soloane Senior Primary School - Mount Fletcher
- Mvuzi Junior Secondary School - Mount Fletcher

#### **Western Cape (Projects completed by Osmond Lange Group's Cape Town office, AVNA Architects)**

- Wes Eind Primary School - Franschoek
- Rustof Primary School - Strand
- Wellington High School - Wellington
- Wellington Primary School - Wellington
- Pinotage Villas Creche - Klapmuts

#### **Outside South Africa**

- Koron Village School - Guinea
- Zanzibar Mission Centre Bible School - Tanzania





P O Box 1621, Saxonwold 2132  
Unit 3 Ground Floor, 3 Melrose Boulevard, Melrose Arch, RSA  
T: 011 994 4300  
F: 011 684 1436  
E: info@o-l.co.za

CAPE TOWN | DURBAN | EAST LONDON | JOHANNESBURG

[www.osmondlange.co.za](http://www.osmondlange.co.za)

