

OSMOND LANGE ARCHITECTS SOUTH AFRICA
PUBLIC TRANSPORT PROFILE



CONTENTS



01 | INTRODUCTION

Office Locations	6
Overview.....	8
Key Personnel.....	9
Services Offered	10

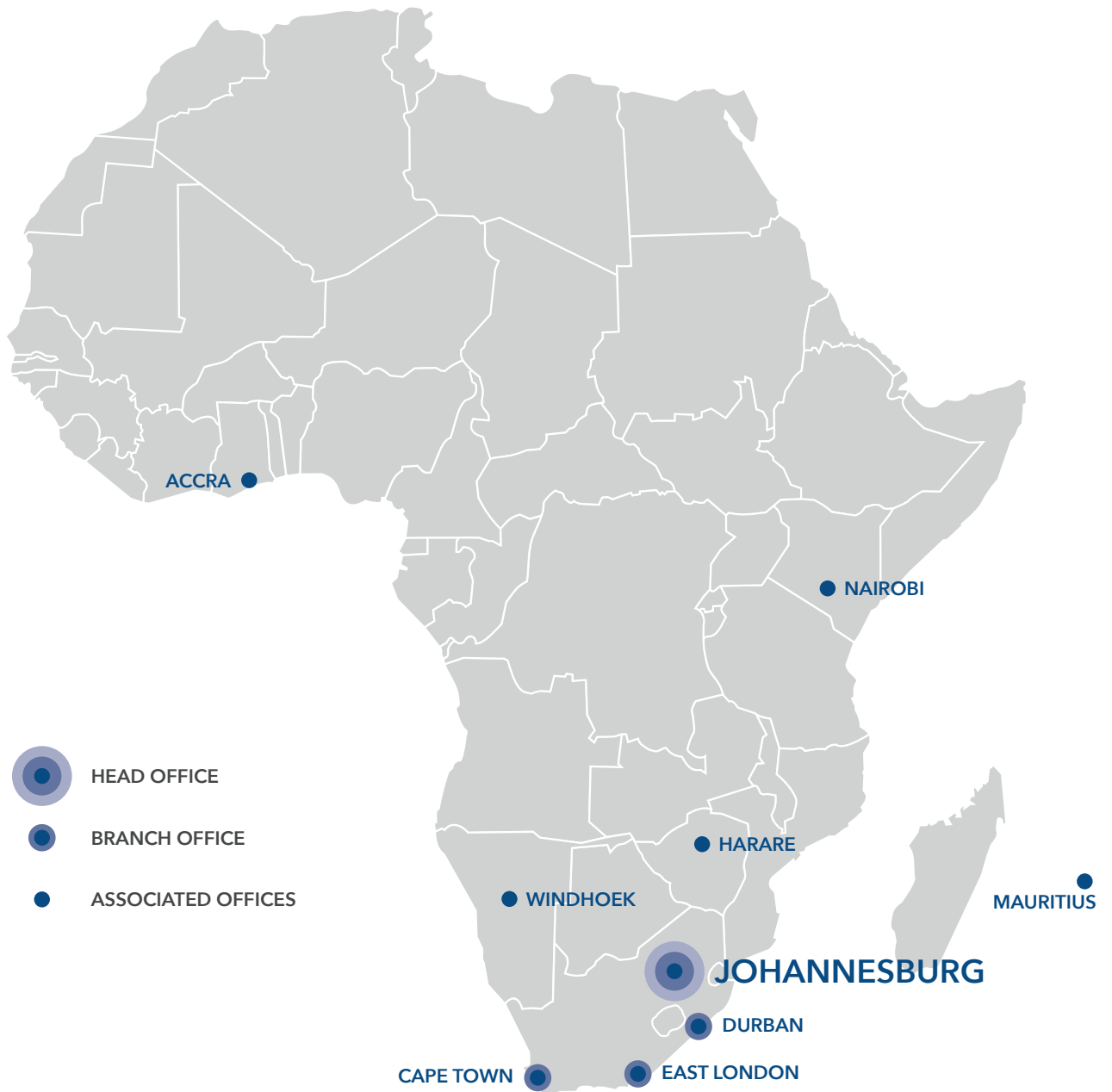
02 | PUBLIC TRANSPORT PROJECTS

Rea Vaya Bus Rapid Transit Project Work Streams	12
Rea Vaya Bus Rapid Transit Station Modules.....	18
Rea Vaya Bus Rapid Transit Bus Depots	20
Rea Vaya Bus Rapid Transit Bus Shelters.....	24
Franschhoek Bus Shelter.....	25
International Transit & Shopping Centre	26
Tshwane Bus Rapid Transit Design Competition Entry	27
Kayamandi Taxi Facility.....	28
Gautrain Park Station Precinct	29
Beitbridge One-Stop Border Post	30
Masimphumlele Taxi Rank	32





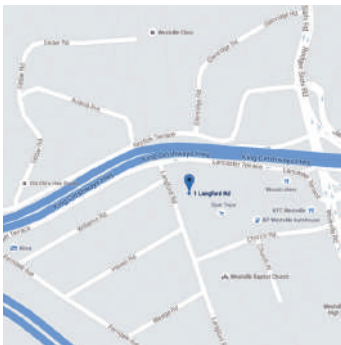
OFFICE LOCATIONS





JOHANNESBURG (HEAD OFFICE)

3 Melrose Boulevard,
Melrose Arch, Johannesburg
Tel: +27 11 994 4300
info@o-l.co.za



DURBAN

1 Nelson Road, 1st Floor Upminster Building,
Essex Gardens, Westville
Tel: +27 31 266 0750
durban@o-l.co.za



EAST LONDON

1st Floor, Pilot Mill House,
The Quarry, Selborne
Tel: +27 43 721 0033
els@o-l.co.za



CAPE TOWN

Tyger Terraces II,
DJ Wood Way, Bellville
Tel: +27 21 948 1877
cpt@o-l.co.za

www.osmondlange.co.za

OVERVIEW

ABOUT

Osmond Lange was established in 1929 and is one of the larger architectural practices in South Africa, with offices in Johannesburg, Durban, East London and Cape Town. The company has built up extensive design and technological expertise specialising in large projects and has actively participated in some of the largest joint ventures in South Africa as lead consultants. The practice blends architecture, urban design and development management skills to deliver an integrated package of professional services to its clients.

Osmond Lange has undertaken work across various sectors, including residential, retail, industrial, education, healthcare and commercial offices with a particular specialisation in relation to the urban design and planning of integrated mixed use commercial precincts.

Osmond Lange Architects South Africa (Pty) Ltd is a new entity established in 2018 within the OL/Ikemeleng group of companies with a specific focus on projects and clients located within South Africa. The company shares the same Executive Management team and draws upon the same pool of staff and technical resources as the other Group entities.

KEY FACTS

6 Directors | Number of Staff: 80+ | Four Offices in South Africa | Associated Offices in Ghana, Kenya, Mauritius, Namibia & Zimbabwe

BROAD- BASED BLACK ECONOMIC EMPOWERMENT

Osmond Lange Architects South Africa is a Level 1 Contributor to Broad-Based Black Economic Empowerment with 51% Black Ownership, measured in terms of the Broad-Based Black Economic Empowerment Act (53/2003) of the Republic of South Africa.

SUSTAINABLE BUILDINGS DESIGN

Osmond Lange is amongst the leading proponents of sustainable design. One of our recent projects, 40 on Oak at Melrose Arch, was the first Multi-Unit Residential building to achieve a 4-Star Green Star Rating. Several of our team members are Green Star Accredited Professionals.

KEY PERSONNEL

DIRECTORS

DAVID CURRIE



David graduated from the University of Witwatersrand in 1992 and joined Osmond Lange in 1999, where he played senior role in the management and design of Melrose Arch. David's expertise ranges from large industrial complexes, shopping centres and office buildings, to hospitals and airports. David relocated to East London in 2007 to provide leadership at Osmond Lange's founding office.

FRANÇOIS NORTJÉ



François qualified as an architect in 1989, and worked for several highly regarded architectural design firms, prior to joining Osmond Lange in 2015. His expertise spans mixed use developments, commercial offices, industrial and residential projects.

GRAHAM WILSON



Graham has 35 years' architectural experience and numerous years with Osmond Lange. His interest in the built environment has progressed to focus extensively on Urban Design and Master Planning of mixed-use developments, civic centres, universities, office buildings, shopping centres and hospitals. Graham's passion is the response new buildings have to public space and the creation of delight in dense, walkable, livable cities.

JONATHAN MANNING



Jonathan has over 20 years' experience as an architect with specific skills and expertise in Urban Design and Public Works including work on Constitution Hill, Rea Vaya Bus Rapid Transit and O. R. Tambo International Airport. With a global and multi-cultural upbringing, Jonathan is passionate about the power of architecture to improve quality of life, celebrate cultural identity and ultimately transform society.

RIDWAAN BHANA



Ridwaan is a Senior Architectural Technologist, specialising in transport, public works, commercial and residential projects. With a National Diploma in Architecture from the Technikon Witwatersrand, Ridwaan's career has spanned over 27 years, incorporating a variety of projects including the Rea Vaya Bus Rapid Transit, mosques, schools and multiple projects at O. R. Tambo International Airport.

SIBUSISO MAUZE



Sibusiso is a Professional Architect with over 20 years' experience. Studying at the University of Natal and growing up in Umlazi has made Sibusiso passionate about how architecture can improve the lives of the less fortunate. Throughout his time at Osmond Lange, he has channelled this interest into multiple Public Works, including several Inner City renewal projects. Latterly he has developed specialised expertise in relation to Retail and Commercial Office Interiors.

CONSULTANTS

DEON VAN ONSELEN



Deon, a Professional Architect with 27 years' experience, has specialised in all aspects of the profession with focus on design and team leadership. His expertise in Healthcare and Public Works has been demonstrated in various works throughout his 20 years as an Osmond Lange Director. Recent major projects include Thelle Moegerane Hospital and the Heineken Sedibeng Brewery.

VICTOR UTRIA



Victor was born in Colombia and obtained his degree in Architecture from the Federal University of Rio de Janeiro, Brazil. He has more than 35 years' experience in a wide variety of commercial, residential, industrial and institutional projects. Extensive international travel and fluency in English, Spanish and Portuguese, allow him to bring extra depth to his work.

SERVICES OFFERED

ARCHITECTURAL SERVICES

Standard Architectural Services, including:

Inception | Concept & Viability | Design Development | Documentation & Procurement | Construction Monitoring | Close-Out

Development Management
Principal Agency

Additional services, including:

Needs Assessment and Brief Development | 3D Modelling and Rendering | Preparation of Marketing Material

URBAN DESIGN SERVICES

Urban Design Frameworks and Masterplans | Urban Development Frameworks (UDFs)/ Spatial Development Frameworks (SDFs) | Urban Design & Land Use Guidelines | Development Strategies
Architectural Guidelines | Transit-Oriented Development | Public Environment Upgrades
Design of Parks and Green Spaces | Design of Street Furniture (benches, litter bins, bollards etc.)

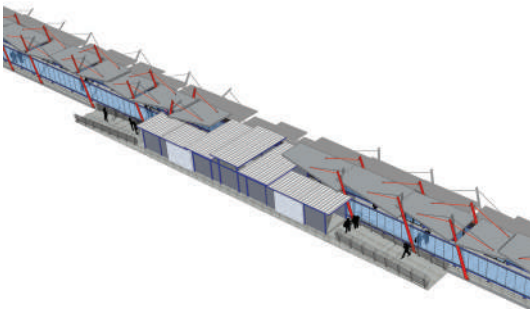
FIELDS OF EXPERTISE

Transport - Airports, Bus Rapid Transit, Railway Stations, Taxi Facilities
Master planning - Mixed Use Precincts, Housing Developments, Industrial Estates
Urban Renewal - Public Environment Upgrades, Parks, Markets
Commercial - Shopping Centres, Office Buildings
Residential - Upmarket, Sectional Title, Affordable
Public Sector- Hospitals, Clinics, Police Stations
Industrial - Manufacturing Plants, Warehouses, Logistics Buildings



REA VAYA BUS RAPID TRANSIT WORKSTREAMS

Johannesburg | Gauteng, South Africa



As the architects for the stations of South Africa's first Bus Rapid Transit (BRT) system, Ikemeleng Architects have pioneered design innovations and standards that have been widely adopted by other BRT systems around the country. Due to the Rea Vaya BRT network being the first fully operational system in the country, our team has also gained invaluable knowledge in relation to operational and maintenance aspects of the station design that have allowed us to further refine and develop the design typologies to improve their functionality and increase their robustness.

During the five years since the inception of the Rea Vaya project our brief has evolved and expanded substantially, far beyond simple standard architectural services. Our relationship with our client, Johannesburg Development Agency and its operational and end-user stakeholders, has transformed gradually over time into a partnership that has facilitated design innovation and responsiveness to shifting needs and requirements.

Some of the multitude of work streams we have assumed responsibility for include:

Design Standards

- Contribution to design standards for South African
- BRT stations, in consultation with National Department of Transport, international BRT specialists and bus manufacturers.
- Preparation of five alternative design "look and feel" options in response to a brief agreed at an initial stakeholder workshop.

Stakeholder Engagement

- Separate workshops with city councillors, city departments and external stakeholder groups.
- Formulation of participatory design engagement process, based on presentation of negotiable and design components.

3D BIM Modelling

- Use of 3D BIM modeling software, ArchiCAD, to model and test complex geometry and connection of structural members and planes.
- Duplicate as-built virtual 3D building in office of on-site construction, facilitating rapid and informed response to consultant and contractor queries.

Access Control

- Turnstile selection and design integration (including visit to manufacturing plant in Germany).
- Formulation of night-security operational model locking and securing of station, roller shutter operations and closing off of individual modules.

Station Signage

- Station signage plan in consultation with accessibility consultant and operations stakeholders.

Bus Docking System

- Design of low tech economic guidance system, stopping points, distance control measures & safety clearances.

Information System

- Consultation with specialists for optimum positions of display units, design of display units (VMS).





Automatic Doors

- Definition of functional and control model for operation of station doors in consultation with door specialist

Ticketing Module

- Design of module as a free standing box ready for plug-in and play.
- Interface with manufacturer around design development of prototype (first of its kind).

Platform Design

- Platform design developed from concrete road culverts, geared to rapid installation and economical fabrication.
- Exploration of low and mixed height platform floor options.

Shelter Module

- Structurally independent, overlapping roof shelter modules. Splayed geometry to overlap station doors sheltering boarding and alighting passengers.

Passive Cooling

- Semi closed system, allows for cross-ventilation via natural means
- Cool air drawn into station at bottom with warm air dissipating at the top.
- Insulated roof structure maintains a comfortable temperature internally.
- Glazing is safety laminated and tinted to filter UV rays and reduce thermal gain during hot weather.

Accessibility Design

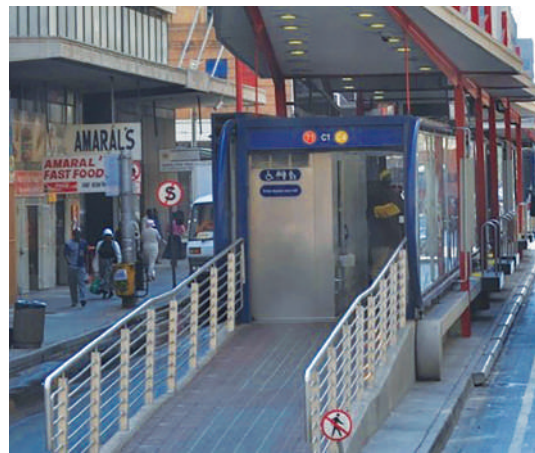
- Design and integration of multiple accessibility measures, including material differentiation, colour and texture changes along surface edges, floor highlights, an induction loop system at the ticket counter, lean rail system (in consultation with Accessibility Specialist).

Promotional Video

- Preparation of brief and voice over script, including translation from English into SeSotho and isiZulu.
- Project management and administration of external specialist team.

Station Precinct Public Environment Upgrade

- Formulation of approved palette of paving materials and furniture elements.
- Paving of pedestrian sidewalks.
- Landscaping of medians (coordinated with Landscape Architect and in consultation with City Parks).
- Street furniture selection and design, including litter bins, bollards, streetlights, and benches.





Urban Design & Land Use Management Guidelines

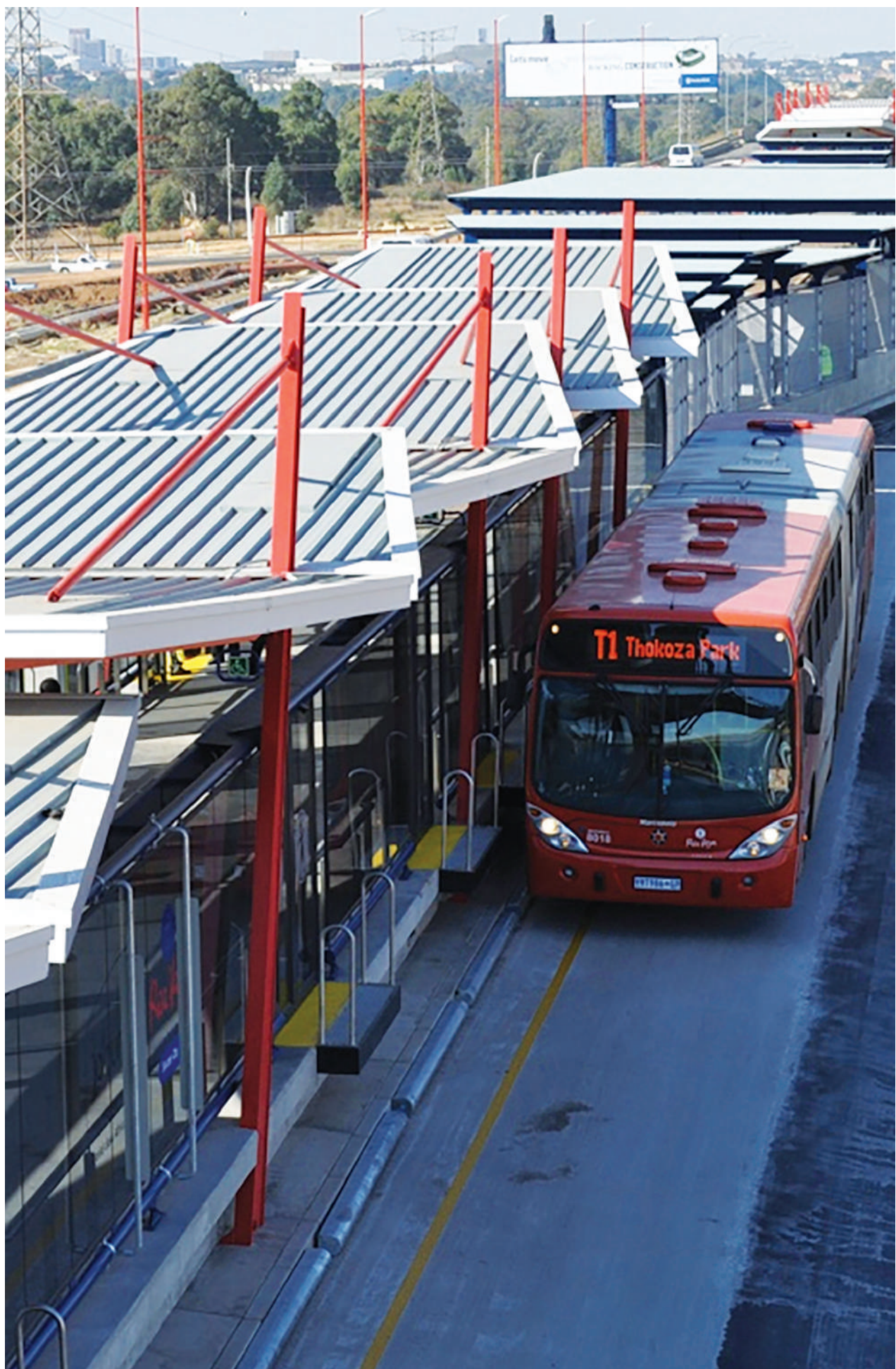
- Densification guidelines for BRT Station nodes.
- Land Use Management Tool.
- Urban Design Guidelines for public spaces and building interfaces.
- Vision plans for BRT route corridors.

Media & Communications

- Route Map graphics.
- Drawings of station building for promotional purposes.
- Interviews with media publications.
- Articles for media publications.
- Papers presented at Conferences and Universities.
- BRT Tours for media, academics and international visitors.

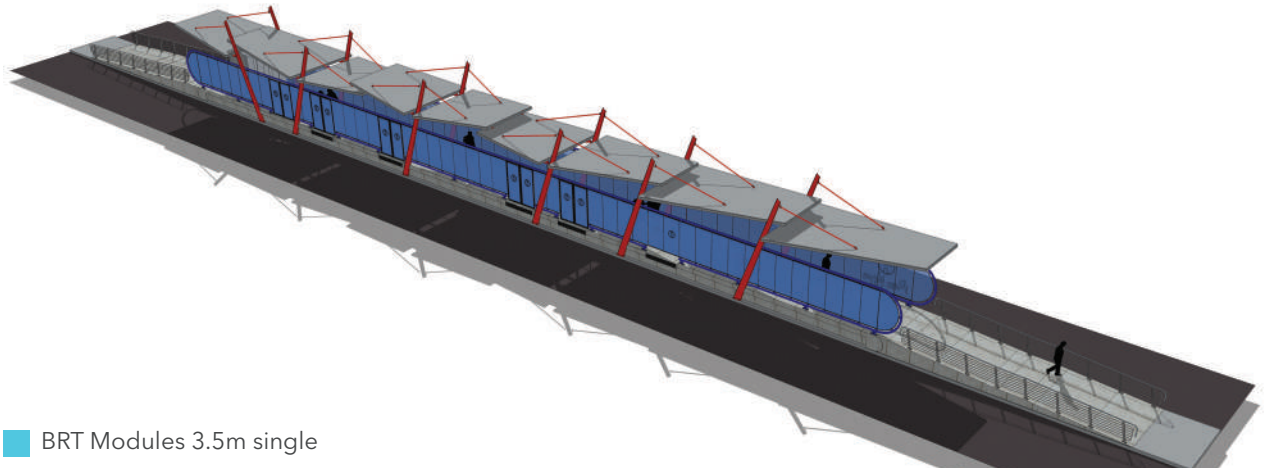
Our Cities Ourselves

- Funded and appointed by New York based advocacy organization, Institute for Transportation and Development Policy.
- Visioning exercise for densification of 1km² around a BRT station.
- Preparation of graphics and narrative for international touring exhibition.
- Papers presented at launches in New York and Johannesburg.

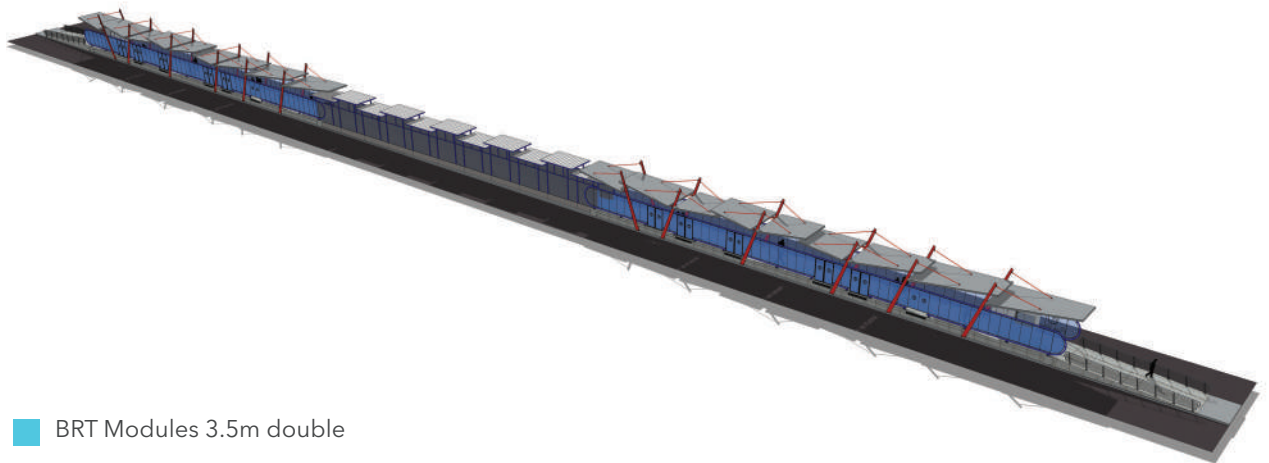


REA VAYA BUS RAPID TRANSIT STATION MODULES

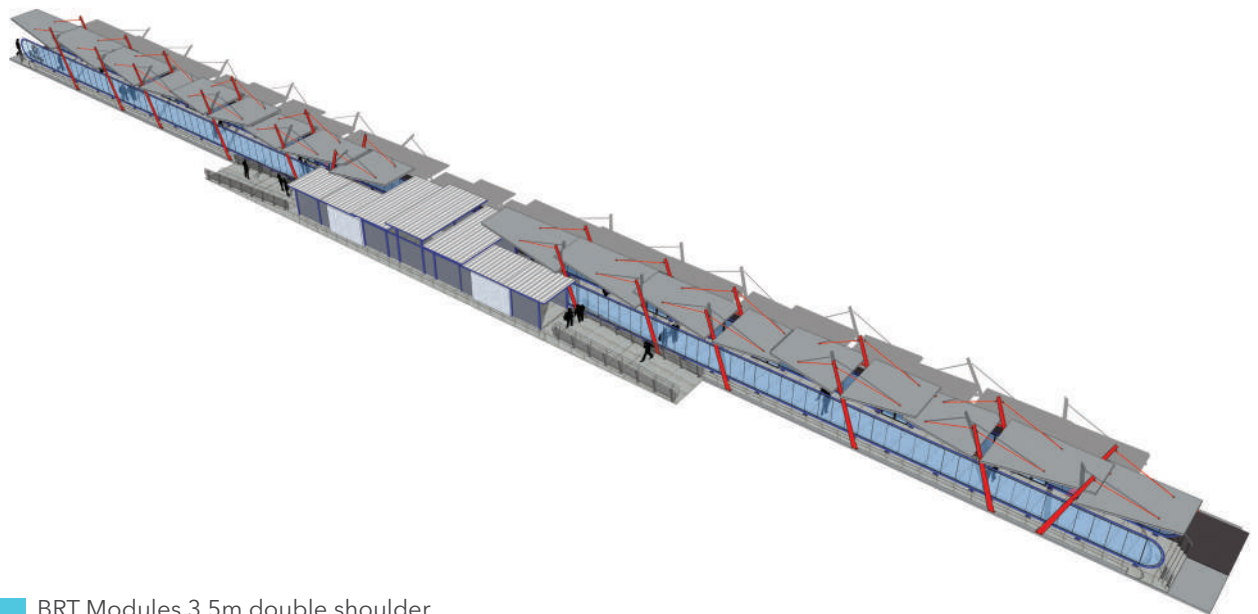
Johannesburg | Gauteng, South Africa



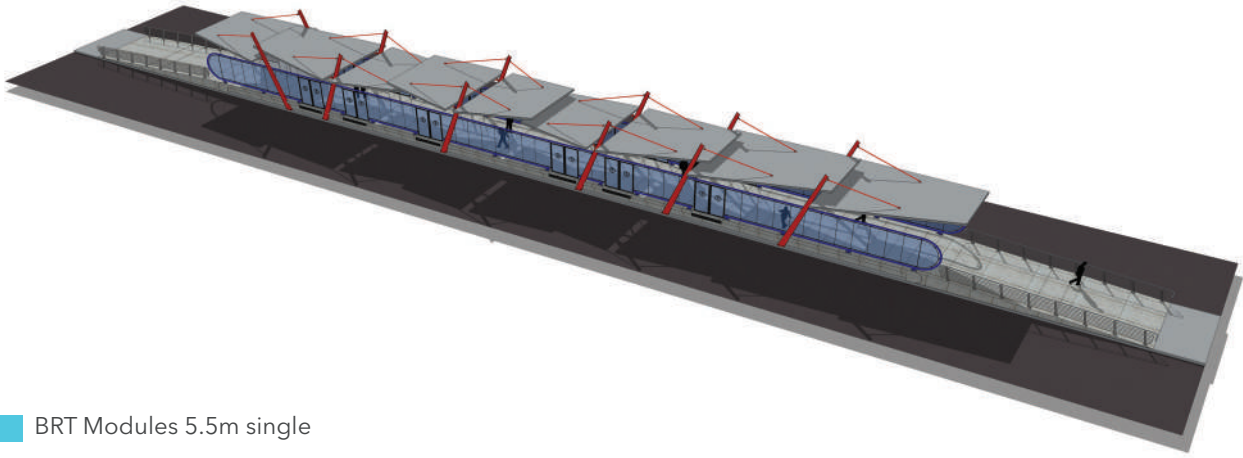
BRT Modules 3.5m single



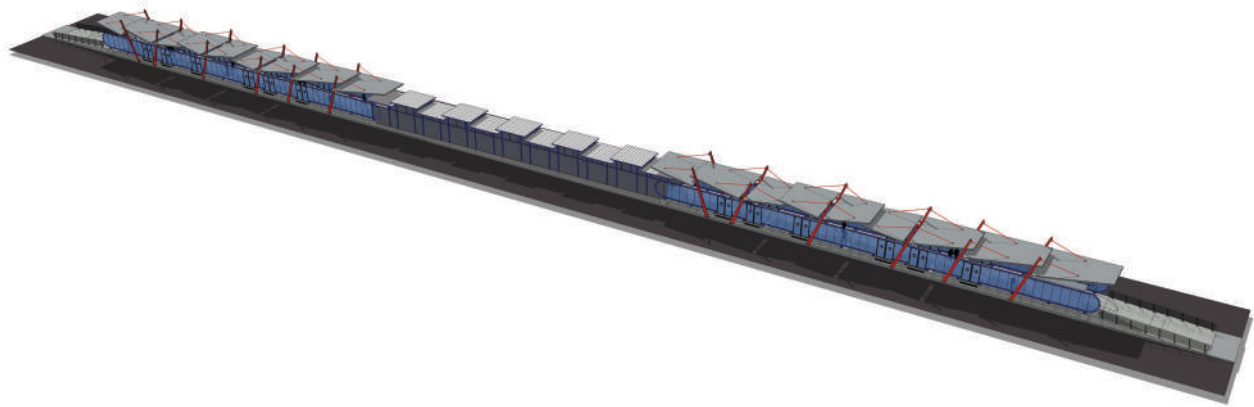
BRT Modules 3.5m double



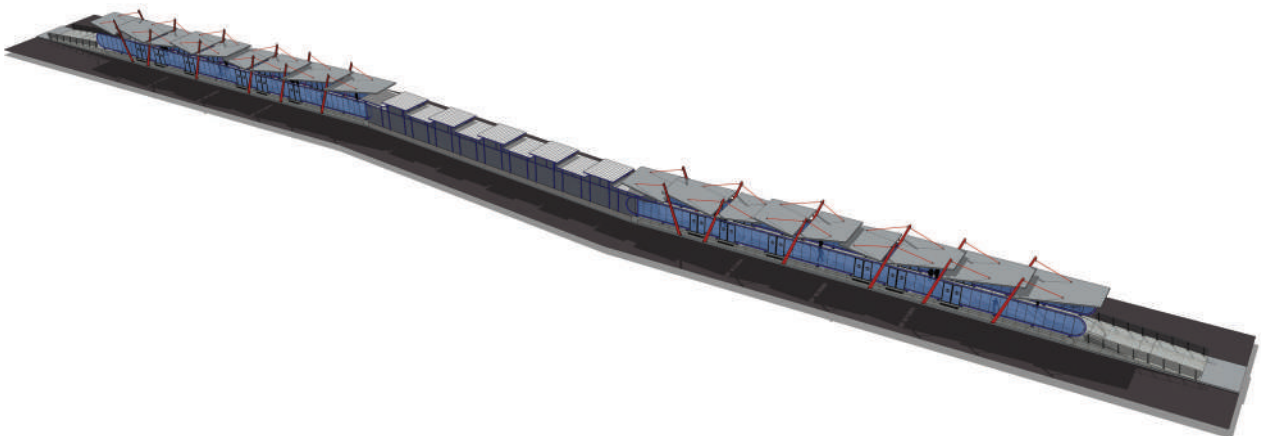
BRT Modules 3.5m double shoulder



■ BRT Modules 5.5m single



■ BRT Modules 5.5m double



■ BRT Modules 5.5m double offset

REA VAYA BUS RAPID TRANSIT BUS DEPOTS

Johannesburg | Gauteng, South Africa

Date:
Ongoing

New building and refurbishment of previous Pitco Bus Company structures.

Client:
Johannesburg
Development Agency

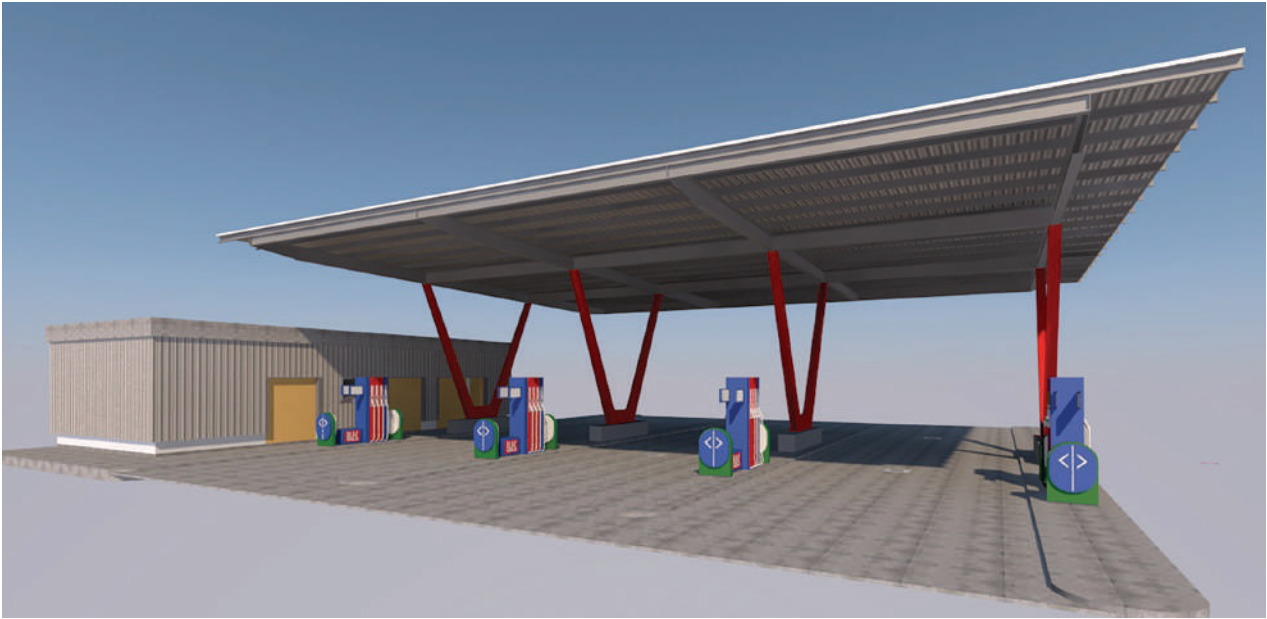
Project Value:
ZAR 197 Million

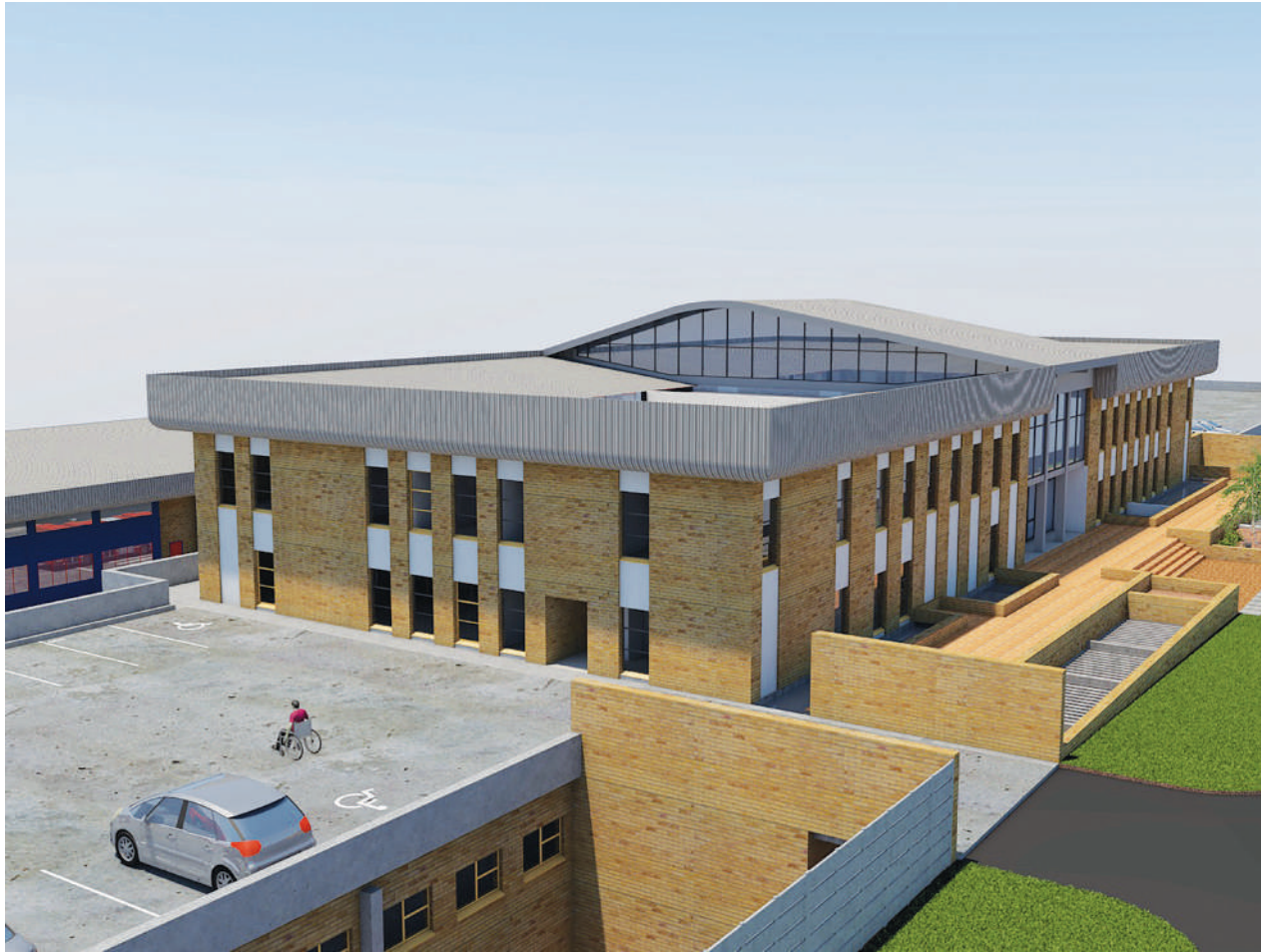


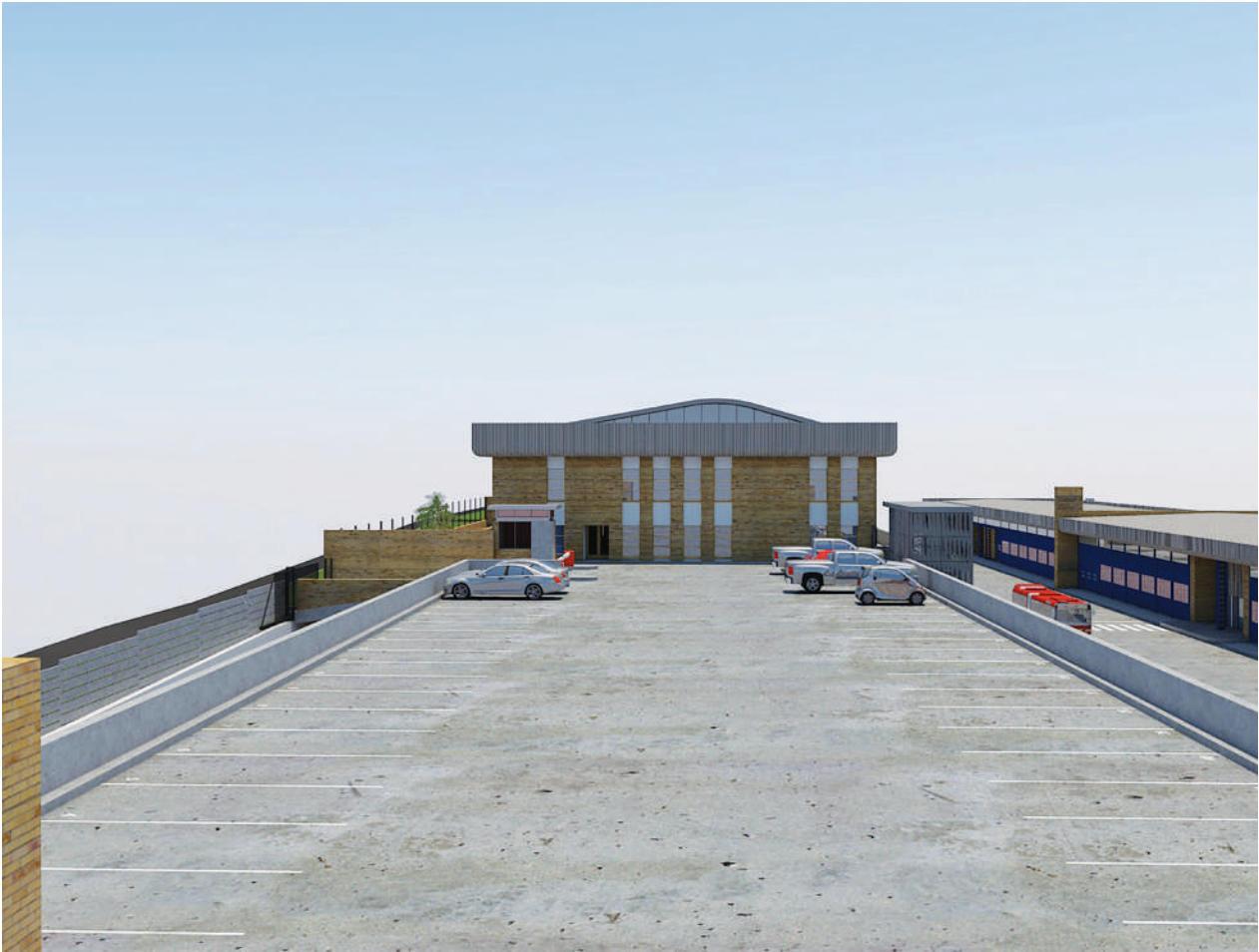
BRT Bus Depot Selby - Refueling Bay 3D Images



BRT Bus Depot Booyens - Layover Facility

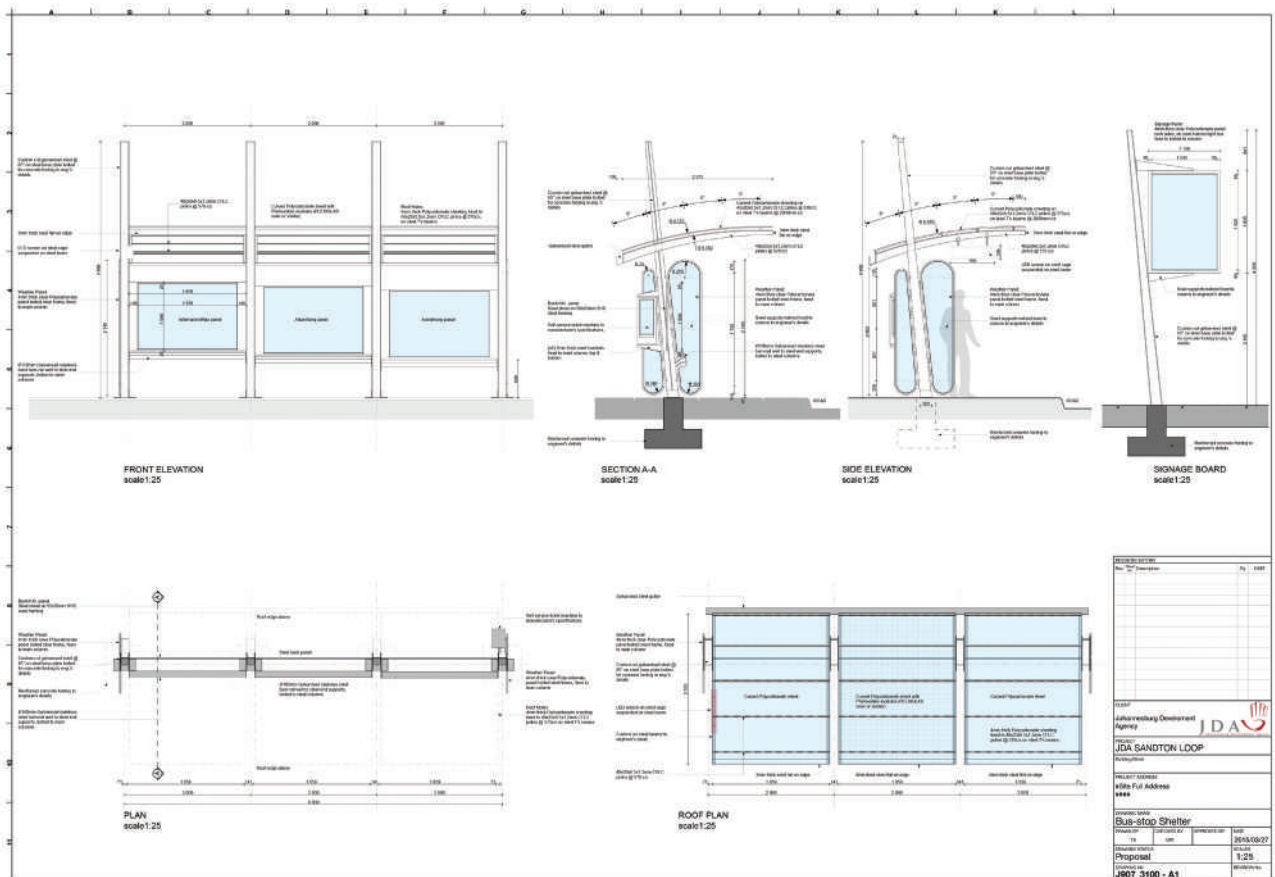






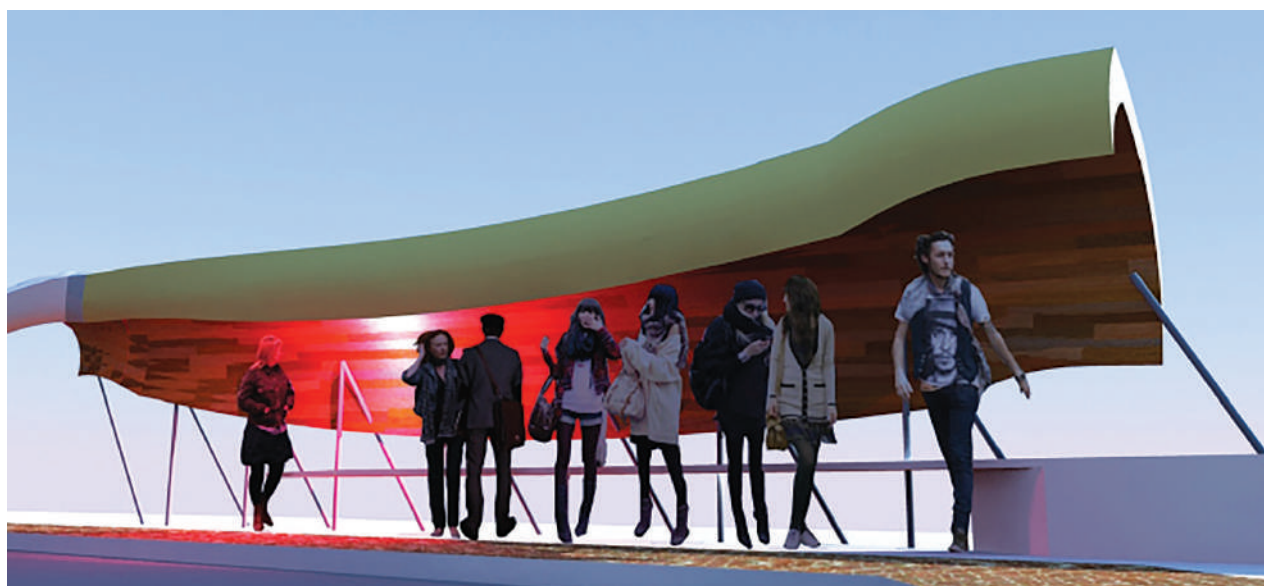
REA VAYA BUS RAPID TRANSIT BUS SHELTERS

Johannesburg | Gauteng, South Africa



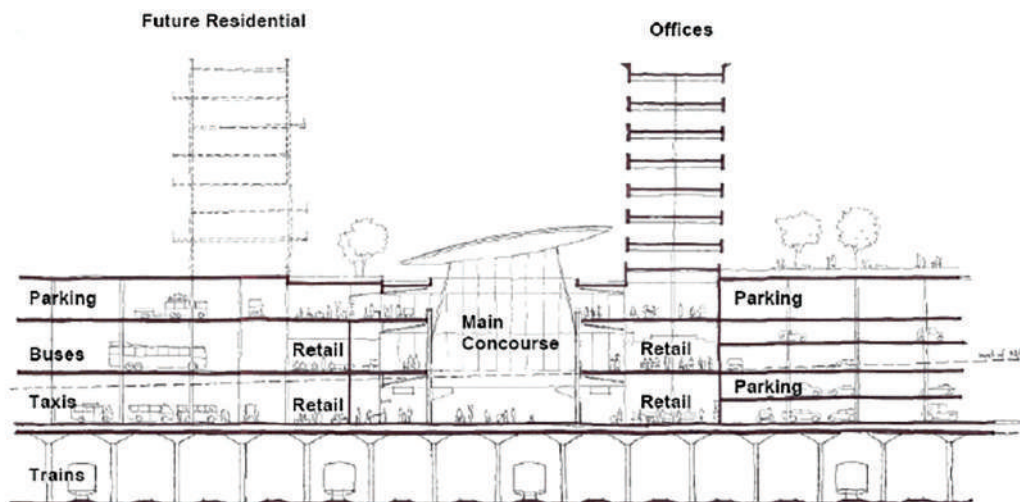
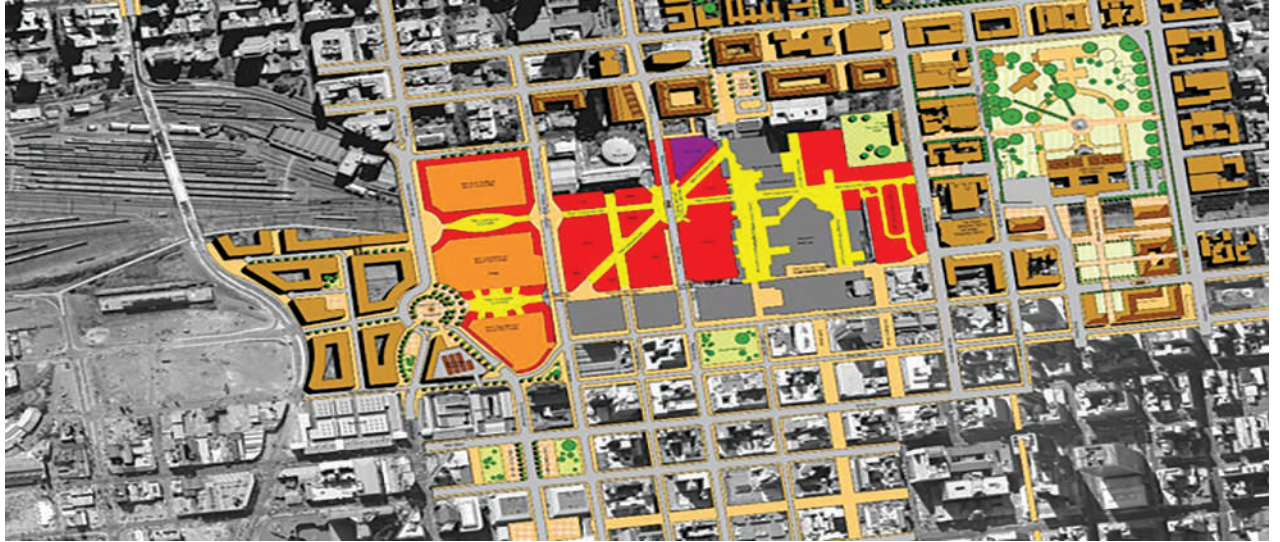
FRANSCHHOEK BUS SHELTER

Franschhoek | Western Cape, South Africa



INTERNATIONAL TRANSIT & SHOPPING CENTRE

Johannesburg | Gauteng, South Africa



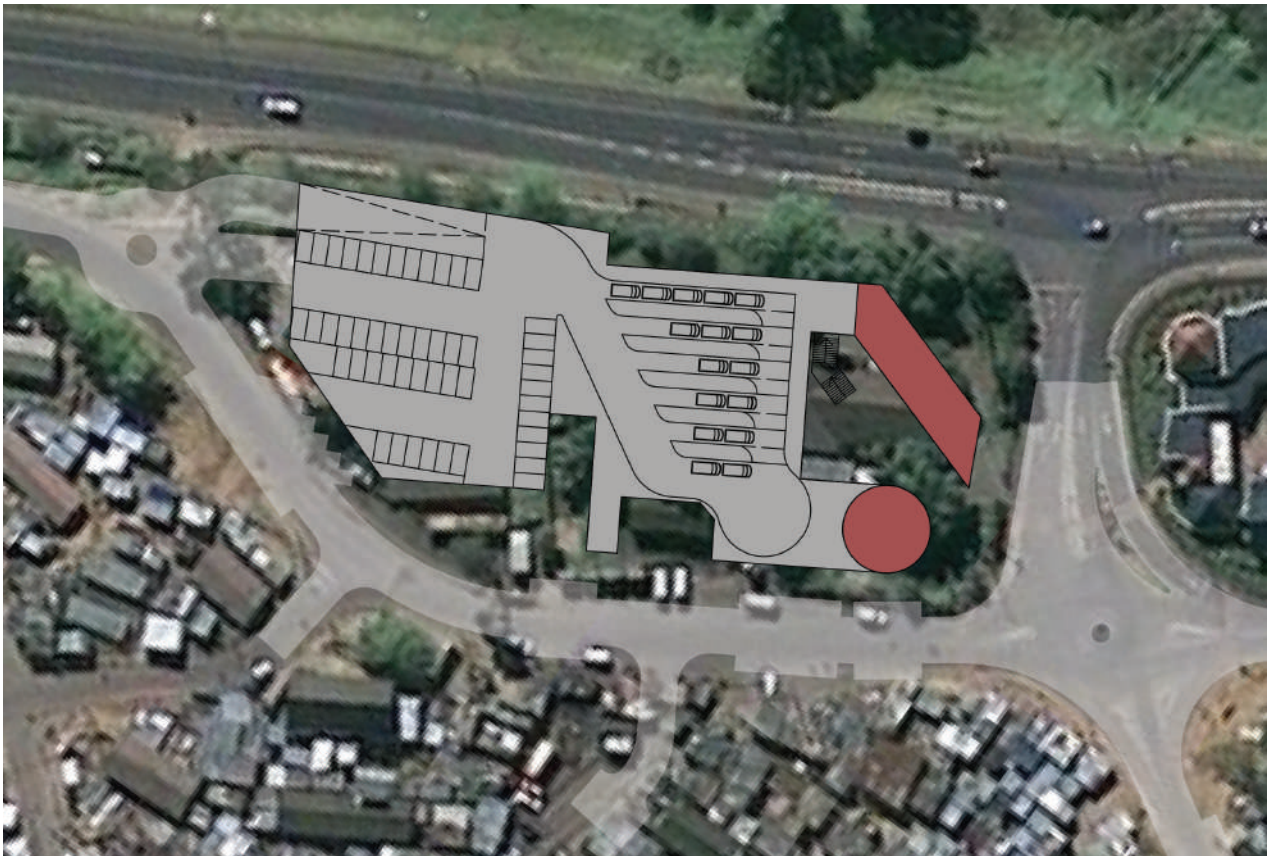
TSHWANE BUS RAPID TRANSIT DESIGN COMPETITION ENTRY

Tshwane | Gauteng, South Africa



KAYAMANDI TAXI FACILITY

Kayamandi | Western Cape, South Africa



GAUTRAIN PARK STATION PRECINCT

Johannesburg | Gauteng, South Africa

Date:
2008

Client:
Johannesburg
Development Agency

Project Value:
ZAR 1.2 Million (Fees)

Collaborators:
Henry Paine,
Herbert Prins &
Ikemeng Architects

Osmond Lange led a consortium working on a combined Urban Design and Heritage Management Framework for the Park Station Precinct in Johannesburg CBD, the largest intermodal transport interchange in Sub-Saharan Africa. The aim of the project was to lay a foundation for urban regeneration and the maximization of development opportunities building upon the development of the new Gautrain station as a catalyst.

A combined approach to urban design and heritage management was adopted, with the substantial heritage significance of the area seen as an opportunity rather than a constraint. The urban design sought to integrate principles of Transit-Oriented Development. Key issues addressed included intermodal interchange integration, land use, bulk and density, built form and building street edge interfaces as well as public environment character and integration.



BEITBRIDGE ONE-STOP BORDER POST

Beitbridge | Matabeleland South, Zimbabwe

Date:
2018 - 2022

Client:
Saldanha Bay IDZ
Licensing Company

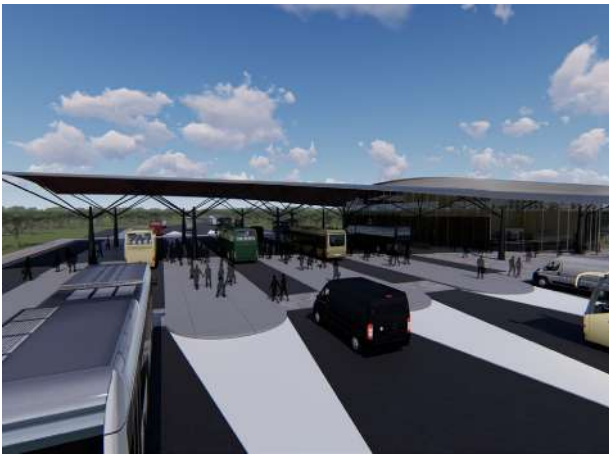
Project Value:
ZAR 2 Billion

Zimborders / Raubex have won the bid to upgrade and maintain the Zimbabwe Border Post facilities at Beitbridge. Knowing of our intimate involvement with the earlier scheme in 2011, they approached OL to assist with the Architecture. The scheme consists of splitting the main Customs & Immigration facilities into three, namely

- Freight
- Buses & Taxis
- Private Vehicles & Pedestrians

The new masterplan is being developed to allow for the implementation of a OSBP facility.





MASIMPHUMLELE TAXI RANK

Beitbridge | Matabeleland South, Zimbabwe

Date:
2015

Client:
City of Cape Town

Project Value:
ZAR

The City of Cape Town: Transport Department intends developing an Integrated Public Transport Interchange on erf 1866, in Masiphumelele (Kommetjie area). At present, an informal minibus taxi rank is located on erf 1728, directly opposite erf 1866. This project was implemented to develop the proposed Public Transport Interchange (PTI). Sustainable Planning Solutions have been appointed by Hatch Goba to fulfill the necessary land use planning requirements to effect this proposal.





P O Box 1621, Saxonwold 2132
Unit 3 Ground Floor, 3 Melrose Boulevard, Melrose Arch, RSA
T: 0861 OLANGE (652 643)
F: (011) 684 1436
E: info@o-l.co.za

CAPE TOWN | DURBAN | EAST LONDON | JOHANNESBURG

www.osmondlange.co.za

